

Service Rd extended by 35m  
with vehicular turning head

Leisure Centre

40 m

PROPOSED  
NEW SCOUT H.Q.

30m

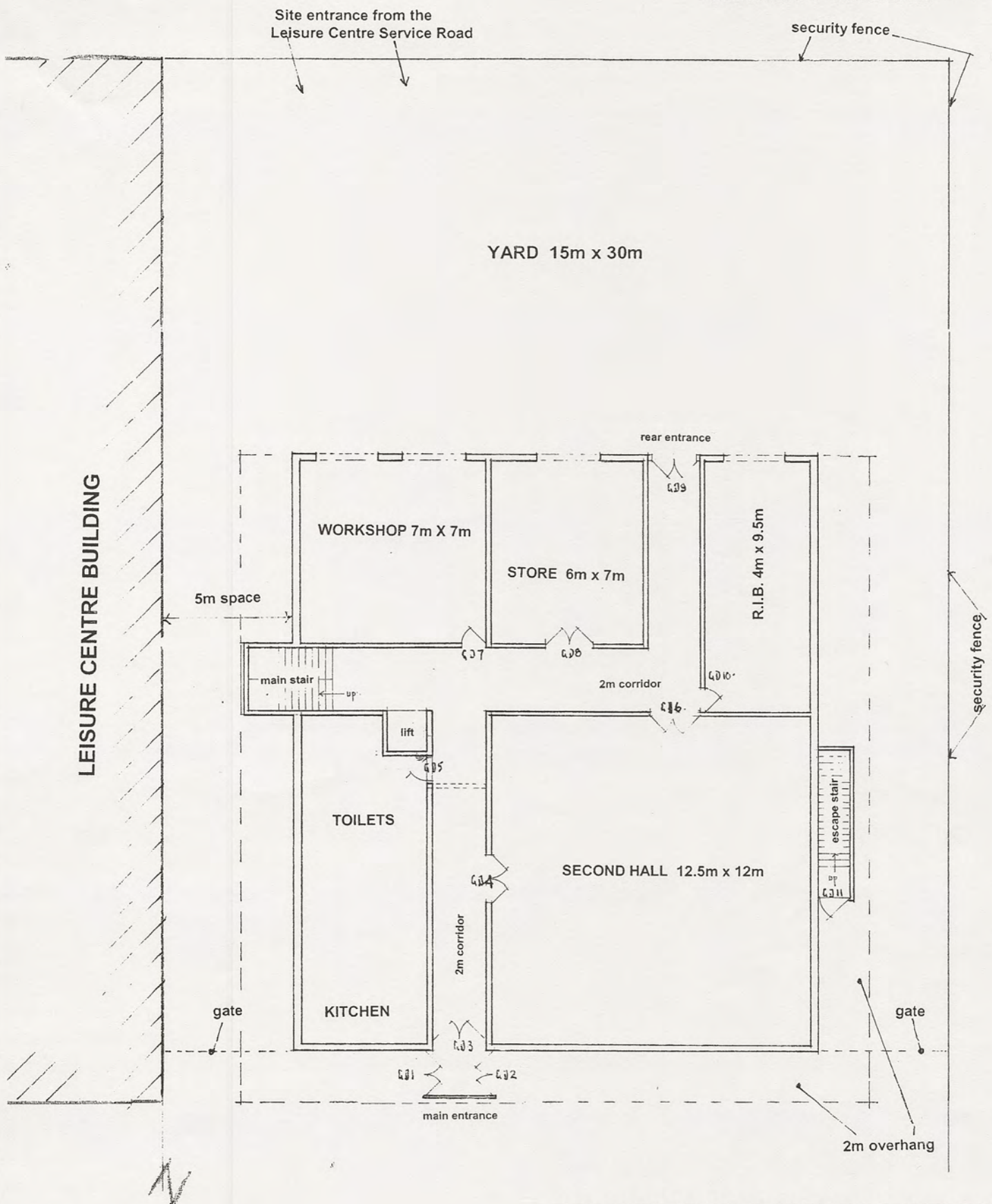
SUGGESTED RELOCATION  
OF SKATE BOARDING

existing path

## ACCOMMODATION AT THE LEISURE CENTRE SITE

# 2<sup>nd</sup> WARWICK SEA SCOUTS

Drawing 2013-1401 – 106 1 : 500 BLOCK PLAN



## ACCOMMODATION AT THE LEISURE CENTRE SITE

### GROUND FLOOR PLAN

Drawing 2013-1401- 107 scale 1 : 200

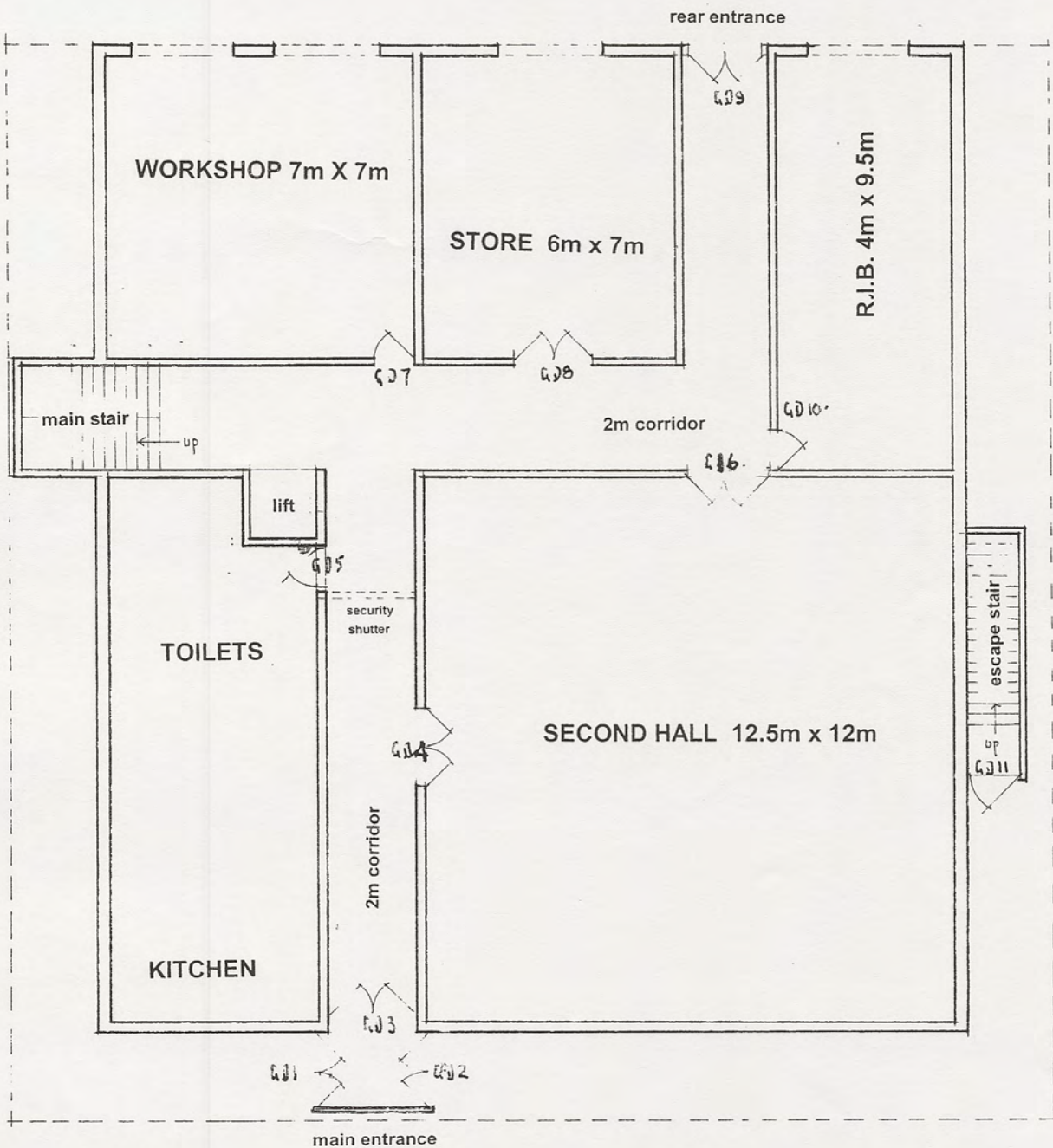
2<sup>nd</sup> WARWICK SEA SCOUTS



ACCOMMODATION AT THE  
LEISURE CENTRE SITE  
2<sup>nd</sup> WARWICK SEA SCOUTS

GROUND FLOOR PLAN

Drawing 2013-1401 - 109 Scale 1 : 100

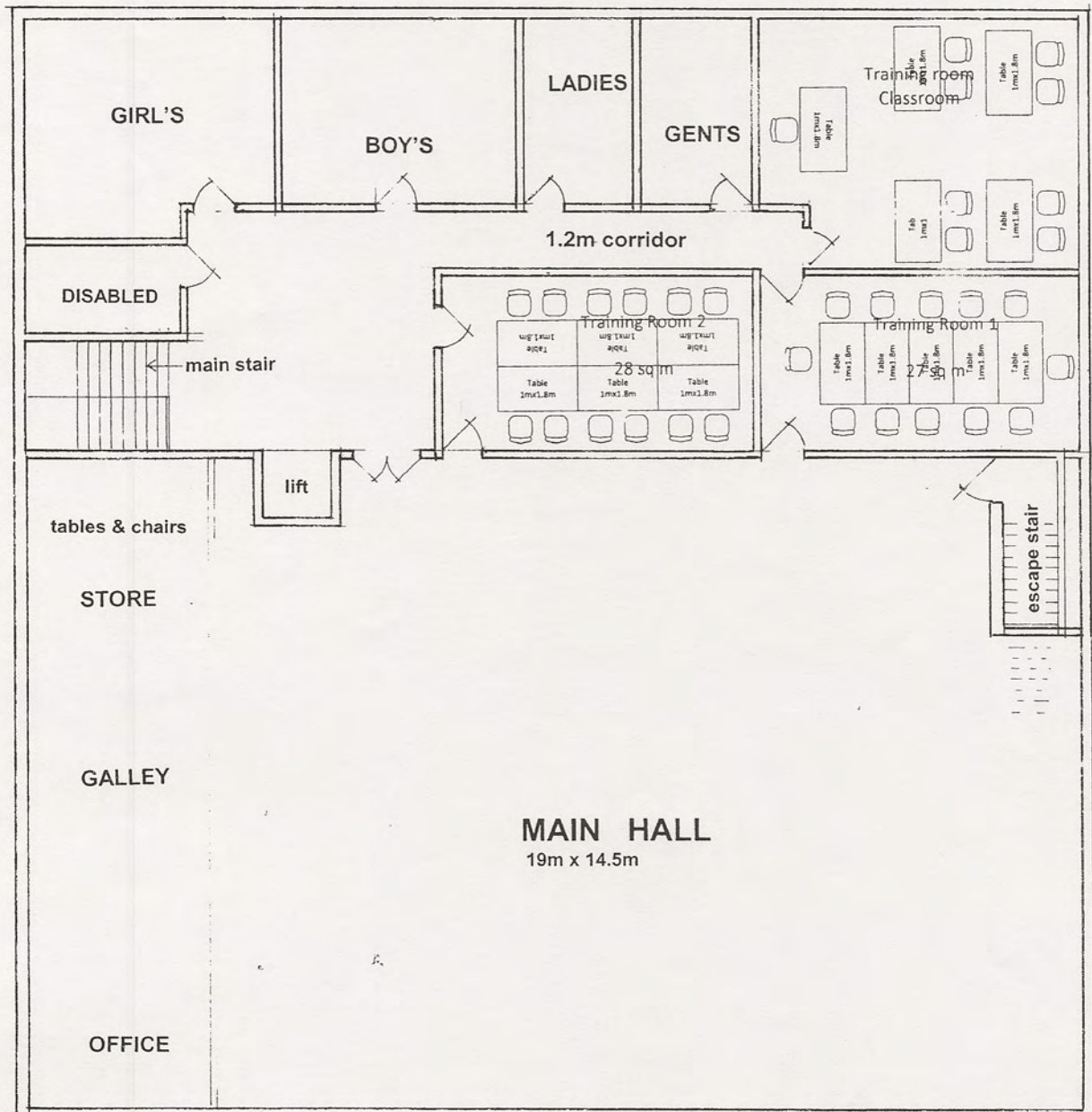
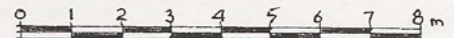


ACCOMMODATION AT THE  
LEISURE CENTRE SITE  
2<sup>nd</sup> WARWICK SEA SCOUTS

FIRST FLOOR PLAN

SCALE 1 : 100

Drawing 2013 -1401- 110

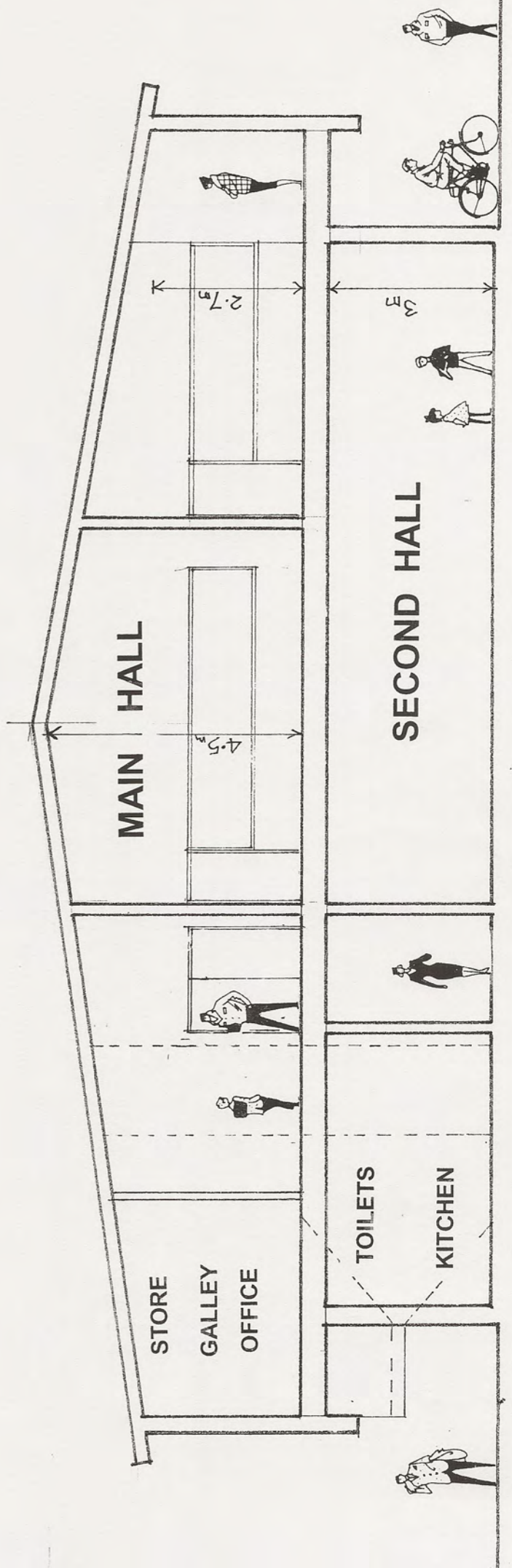
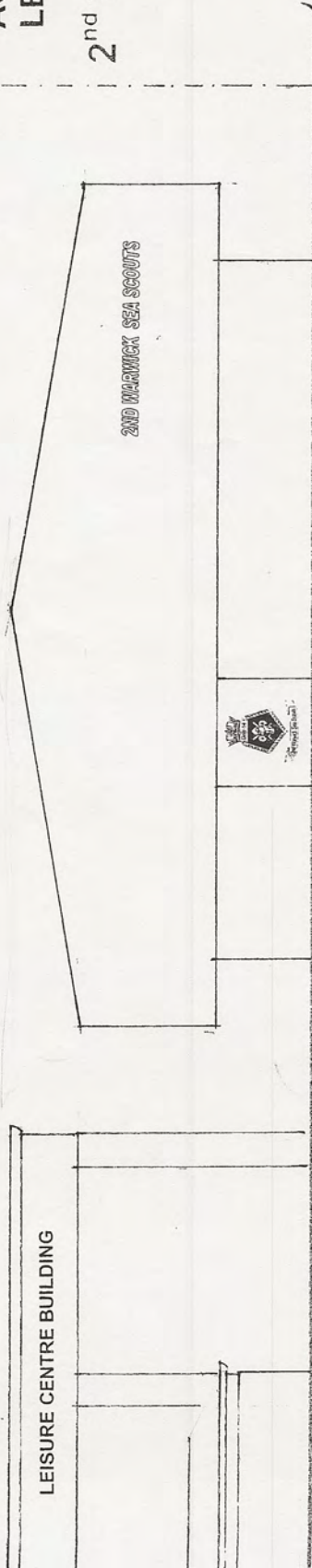




ACCOMMODATION AT THE  
LEISURE CENTRE SITE

2<sup>nd</sup> WARWICK SEA SCOUTS

Drawing 2013-1401- 108





**Drawing 2013-1401-102**

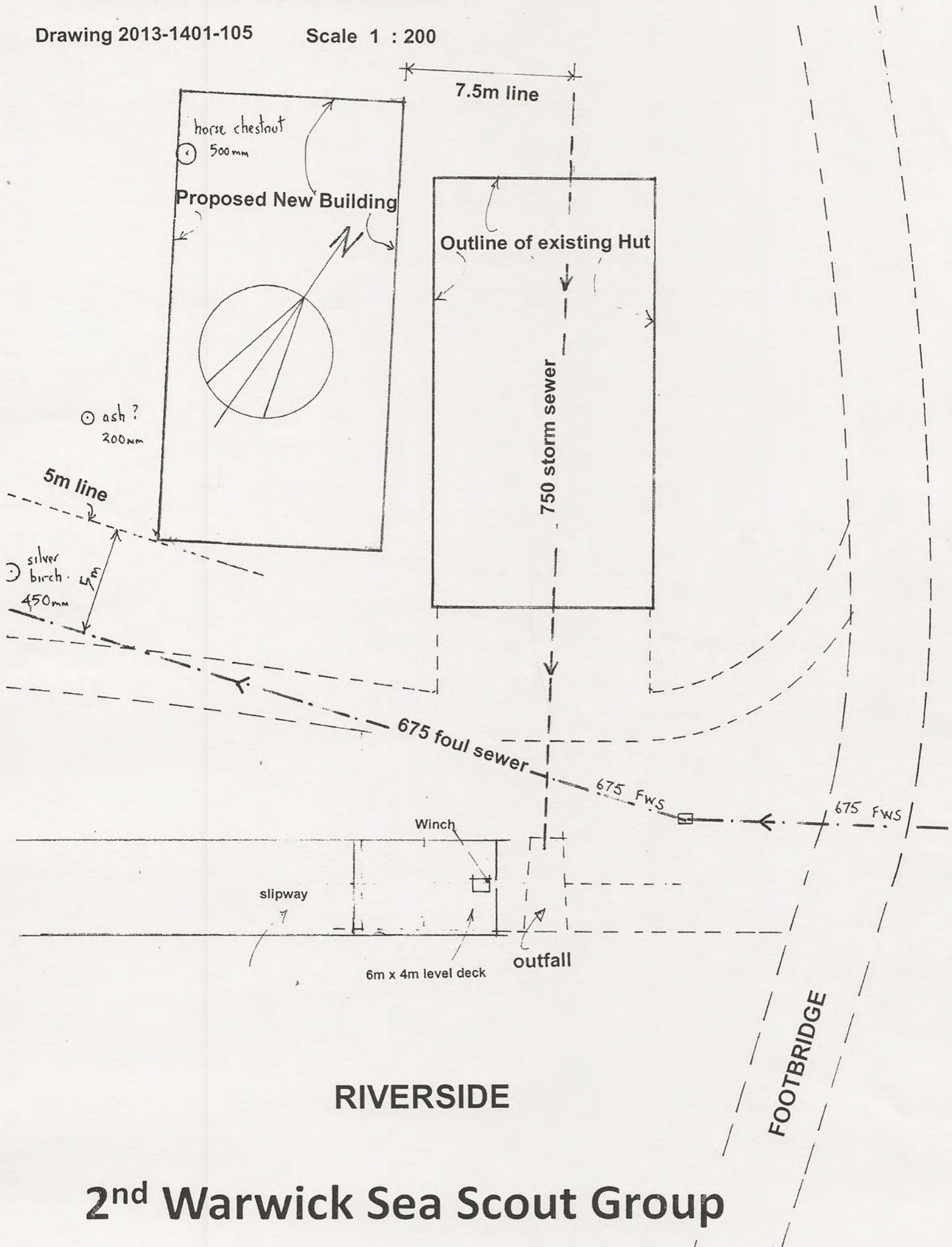




# 2<sup>nd</sup> WARWICK SEA SCOUTS RIVERSIDE ACCOMMODATION

Drawing 2013-1401-105

Scale 1 : 200



## 2<sup>nd</sup> Warwick Sea Scout Group

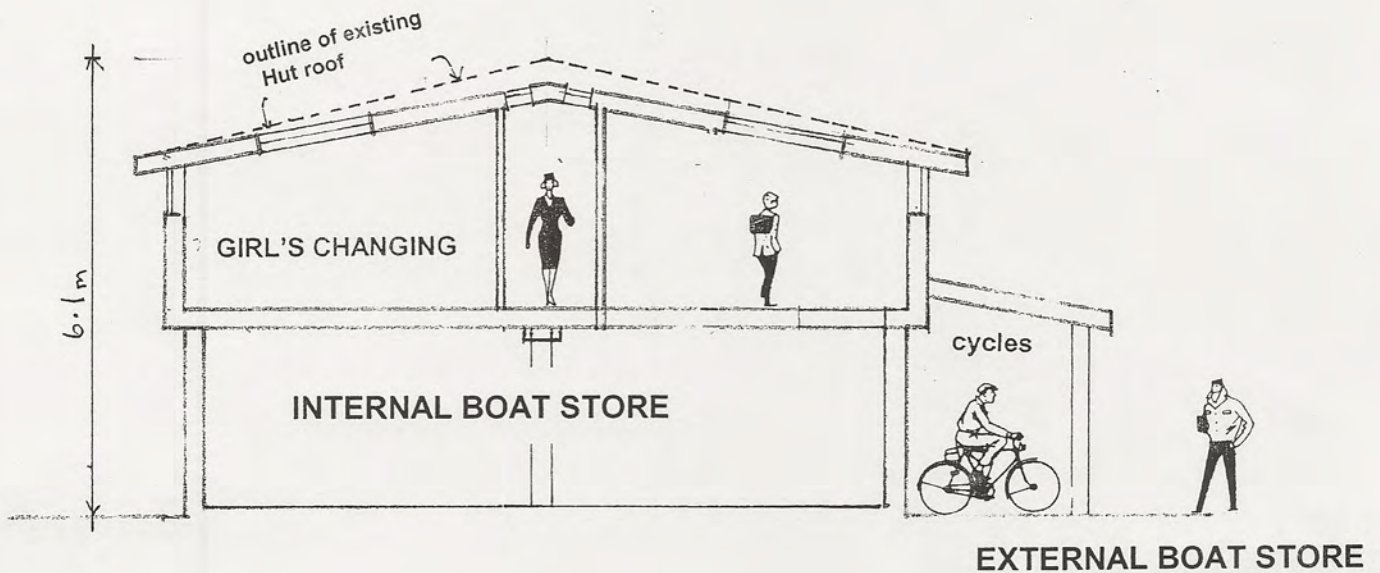
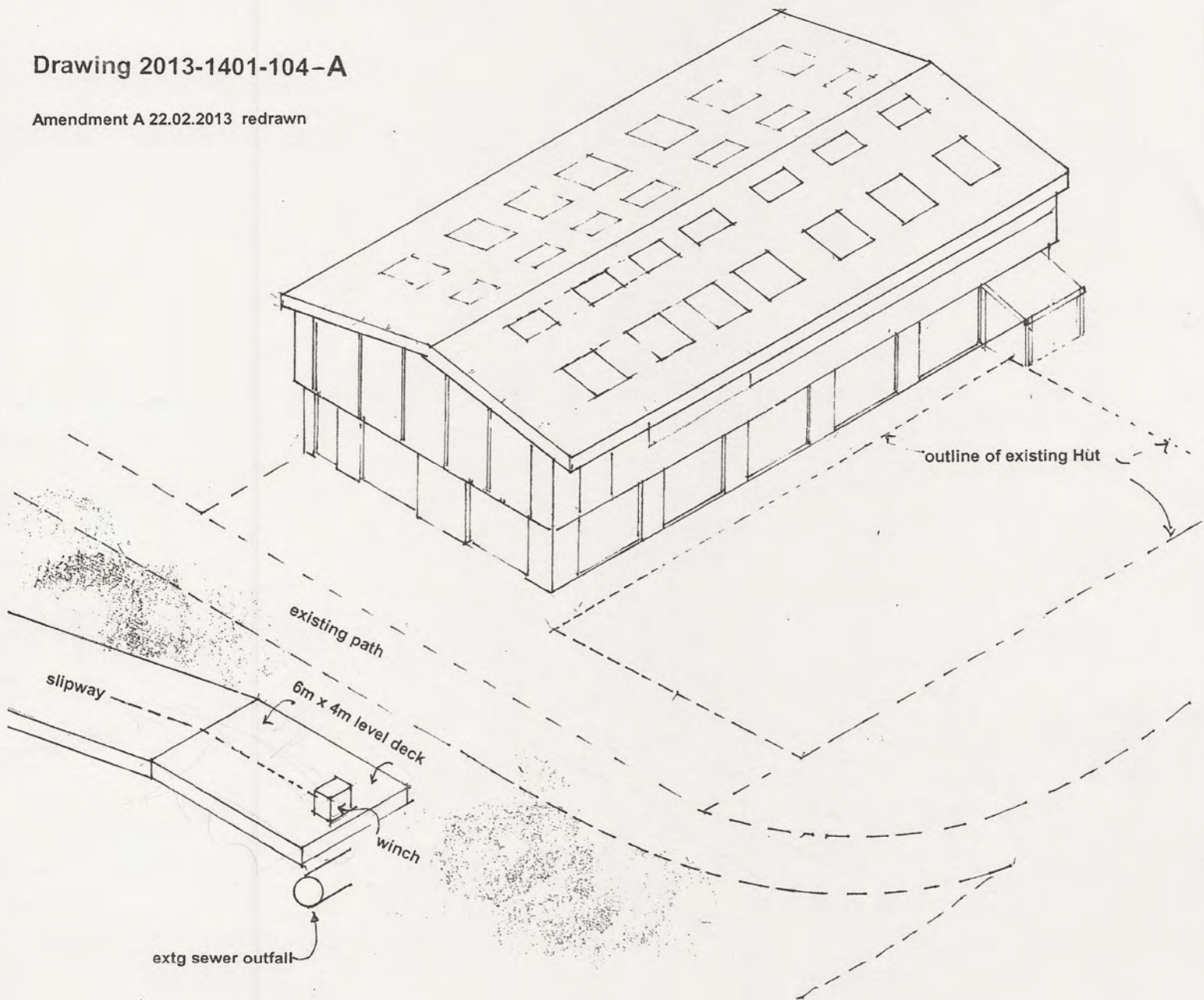


# 2<sup>nd</sup> WARWICK SEA SCOUTS RIVERSIDE ACCOMMODATION

Laurie Day Design Group. Architects.  
25 THEATRE ST WARWICK CV34 4DP. TEL. WARWICK 01926 410891

Drawing 2013-1401-104-A

Amendment A 22.02.2013 redrawn





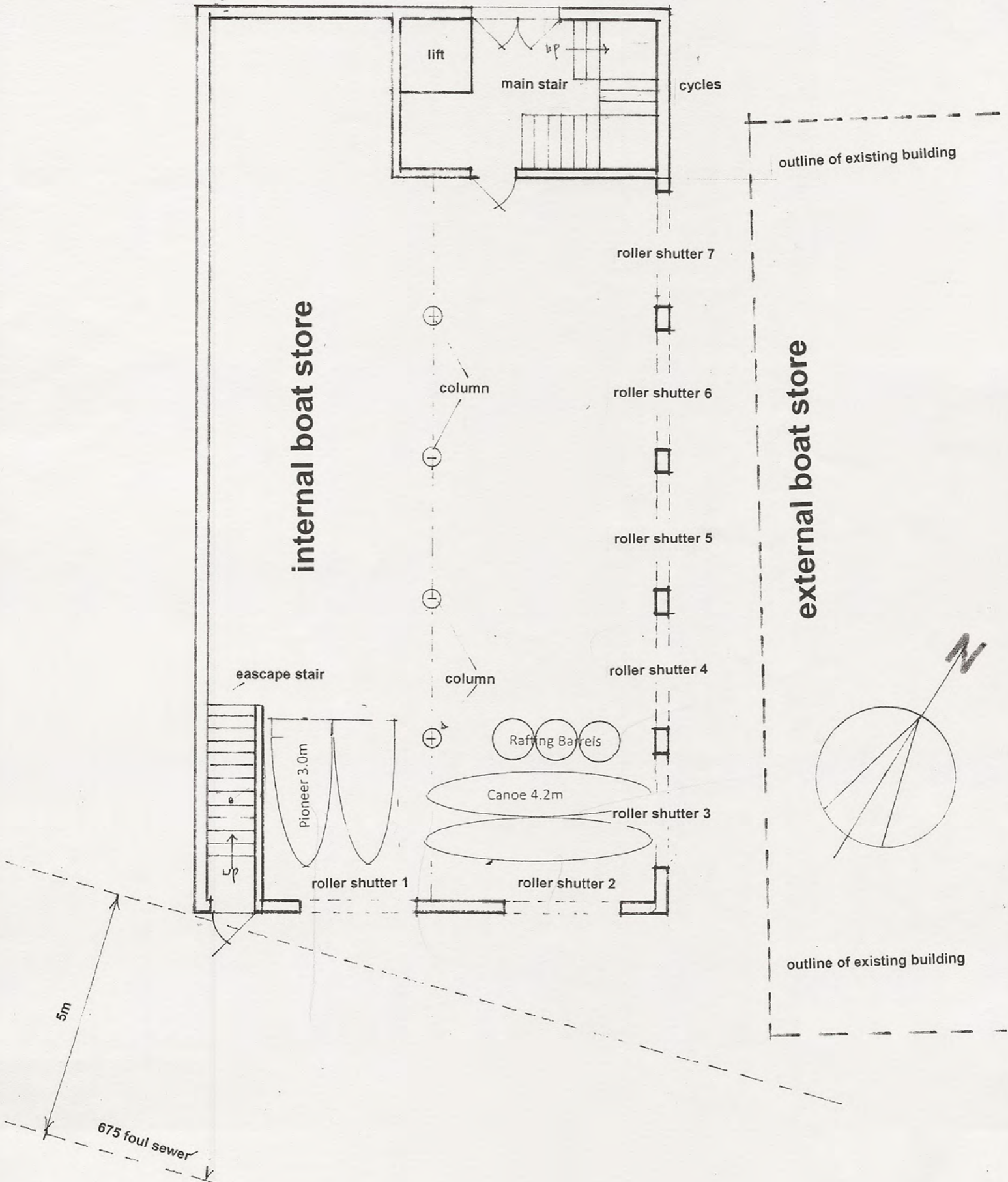
# 2<sup>nd</sup> WARWICK SEA SCOUTS RIVERSIDE ACCOMMODATION GROUND FLOOR PLAN

Laurie Day Design Group. Architects.  
25 THEATRE ST WARWICK CV34 4DP. TEL. WARWICK 01925 410891

Drawing 2013-1401-101-A scale 1 : 100

Amendment A 22.02.2013 redrawn

7.5m to 750 storm sewer





# 2<sup>nd</sup> WARWICK SEA SCOUTS RIVERSIDE ACCOMMODATION FIRST FLOOR PLAN

Laurie Day Design Group. Architects.  
25 THEATRE ST WARWICK CV34 4DP. TEL WARWICK 01926 410891

Drawing 2013-1401-100-A scale 1 : 100

Amendment A 22.02.2013 redrawn

