	OVERVIEW & SCRUTINY COMMITTEE 4th November, 2014	Agenda Item No. 6
Title: Updated CCTV Figures		
For further information about this report please contact	Pete Cutts Safer Communities Manager pete.cutts@warwickdc.gov.uk 456021	
Wards of the District directly affected	All	
Is the report private and confidential and not for publication by virtue of a paragraph of schedule 12A of the Local Government Act 1972, following the Local Government (Access to Information) (Variation) Order 2006?	No	
Date and meeting when issue was last considered and relevant minute number	1 st July, 2014 – Minute 18	
Background Papers	CCTV – Is the Service Delivering an Effective and Value for Money Service for the Community? March 2009	

Contrary to the policy framework:	No
Contrary to the budgetary framework:	No
Key Decision?	No
Included within the Forward Plan? (If yes include reference number)	No
Equality & Sustainability Impact Assessment Undertaken	No
None	

Officer/Councillor Approval		
Officer Approval	Date	Name
Chief Executive/Deputy Chief Executive	24/10/14	Andrew Jones
Head of Service	24/10/14	Richard Hall
CMT		
Section 151 Officer		
Monitoring Officer		
Finance	27/10/14	Mike Snow
Portfolio Holder(s)	24/10/14	Cllr Michael Coker
Consultation & Community Engagement		
Not for this report		
Final Decision?	n/a	

Suggested next steps (if not final decision please set out below) Overview & Scrutiny have asked for updated figures following a report on the effectiveness and value of the CCTV Service.	

1. **SUMMARY**

- 1.1 This report gives updated figures on customer satisfaction, income and expenditure and performance.

2. **RECOMMENDATIONS**

- 2.1 Note the contents of the report.

3. **REASONS FOR THE RECOMMENDATION**

- 3.1 In order to assess the effectiveness and value for money of the CCTV service.

4. **POLICY FRAMEWORK**

- 4.1 Policy Framework – the CCTV provides a significant service in helping to make the district a safer place.
- 4.2 Fit for the Future – Crime & Disorder impacts significantly on the quality of life of residents, businesses and visitors. The level of crime and disorder is cited as the top consideration when deciding on where to live.

5. **BUDGETARY FRAMEWORK**

- 5.1 There are no costs associated with this report.

6. **ALTERNATIVE OPTIONS CONSIDERED**

- 6.1 Not applicable

7. **BACKGROUND**

- 7.1 Figures are attached in Appendix 1

Citizens' Panel Survey December 2010

Community safety and CCTV (work with the police and other partners to tackle crime)	<i>Better</i>	<i>Stayed the same</i>	<i>Worse</i>	<i>Don't know</i>
2009	17.10%	52.30%	9.00%	21.70%
2010	12.00%	62.40%	8.20%	17.40%

This was the last year that the Citizens Panel Survey was carried out.

Community Safety and CCTV

63% of respondents were satisfied with the work involved for community safety and CCTV, with 11% dissatisfied. The satisfaction level was 5 percentage points higher in 2010 than 2009.

Chart 31:

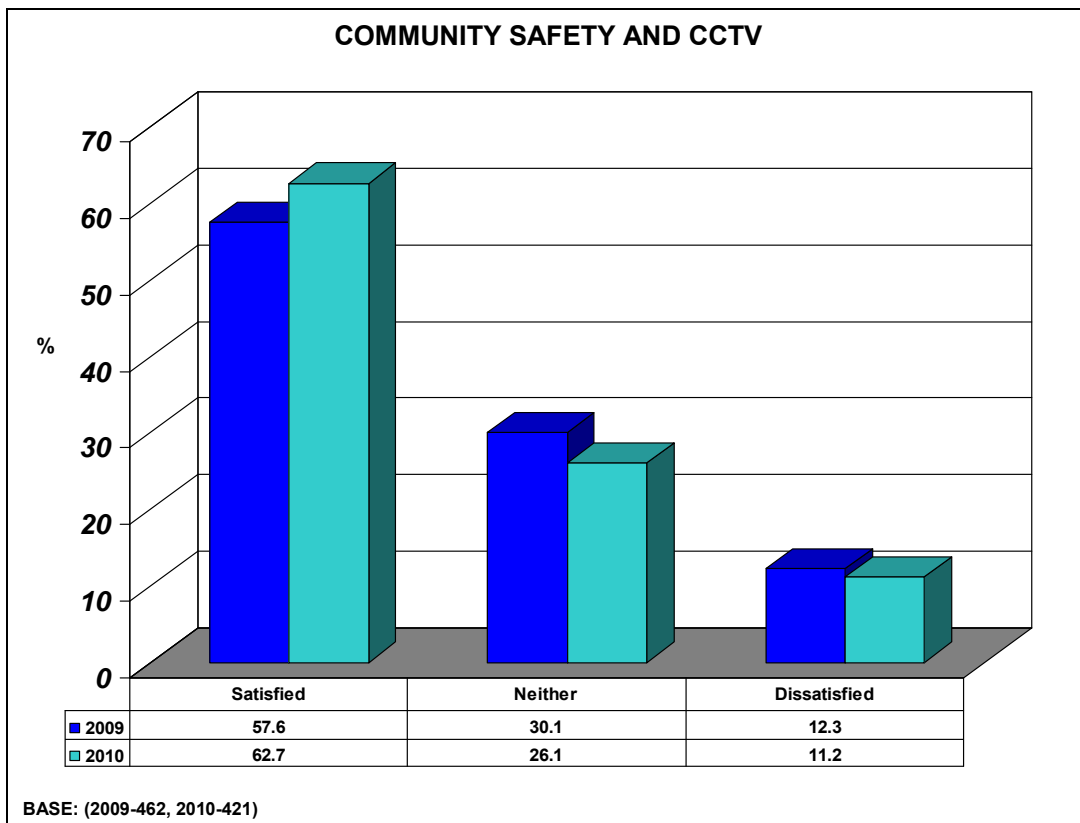
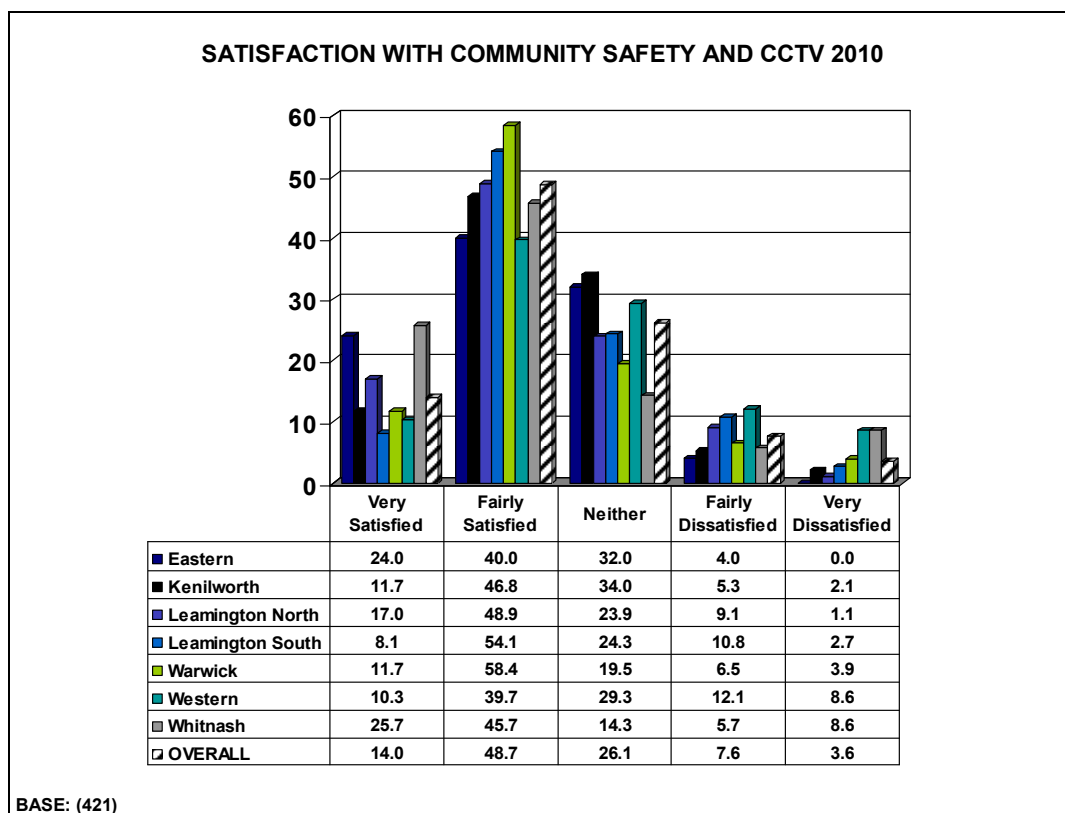


Chart 32:



71% of residents in Whitnash and 70% of those living in Warwick were satisfied with community safety and CCTV. However in the Western Rural area this figure fell to 50% and dissatisfaction was as high as 21%.

Income and expenditure

- The Southern Area Police Commander used to receive a Basic Command Unit budget and from that a contribution of £8,000 was made annually for CCTV. That budget ended in 2010. Despite considerable effort and a persuasive argument about the value of CCTV Cllr Doody was not successful in securing funding from Police. All central government funding for crime and disorder is now allocated to the Police & Crime Commissioner (PCC).
- A £3,167 bid to the PCC for additional staffing during the busiest periods was successful this financial year
- The Council continues to receive an £8,000 p.a. external financial contribution for monitoring Regent Court in Leamington Spa.
- In 2008/09 there were internal recharges only to the Housing Revenue Account of £75,000 but the total of internal recharges is now £309,000 (including HRA, car parks and parks).
- In 2008/09 the Council spent £440,000 per annum on providing CCTV coverage. The net service cost was £357,000 p.a.
- In 2014/15 the council has budgeted for £474,000 and with recharges the net service cost is now £157,000.

Update of the 2008 CCTV Report Charts

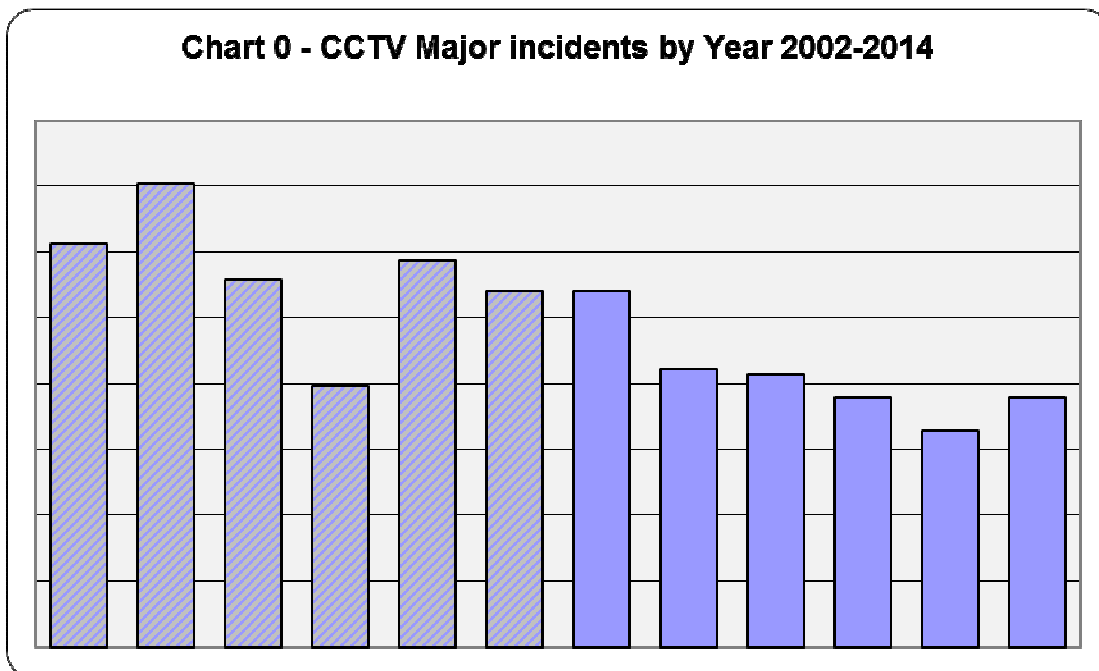
The charts in the published report have been updated where corresponding data is readily available, and some additional charts added to illustrate the trend over time.

Charts vary in format and style, but this is seen as a working document rather than a finished report.

Where years are referred to they are all Municipal years (April to March) rather than calendar years.

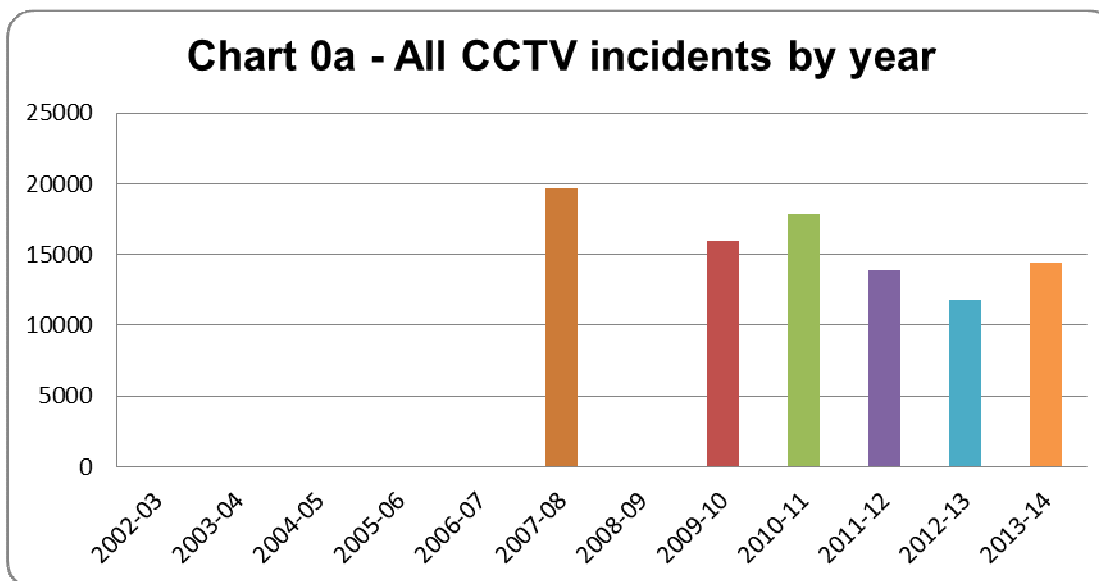
G R Illingworth October 2014

Chart 0 - CCTV Major incidents by Year 2002-2014



This is a new chart which illustrates a downward trend in Major incidents involving CCTV in Warwick District, over the past 10 years.

Chart 0a - All CCTV incidents by year



There has been a very similar downward trend in the total of all CCTV incidents in the last five years. Comparable earlier figures are not readily available.

Both these charts show a small increase in the last year. Whether this is a significant change only time will tell.

Chart Location - All Incidents 2008

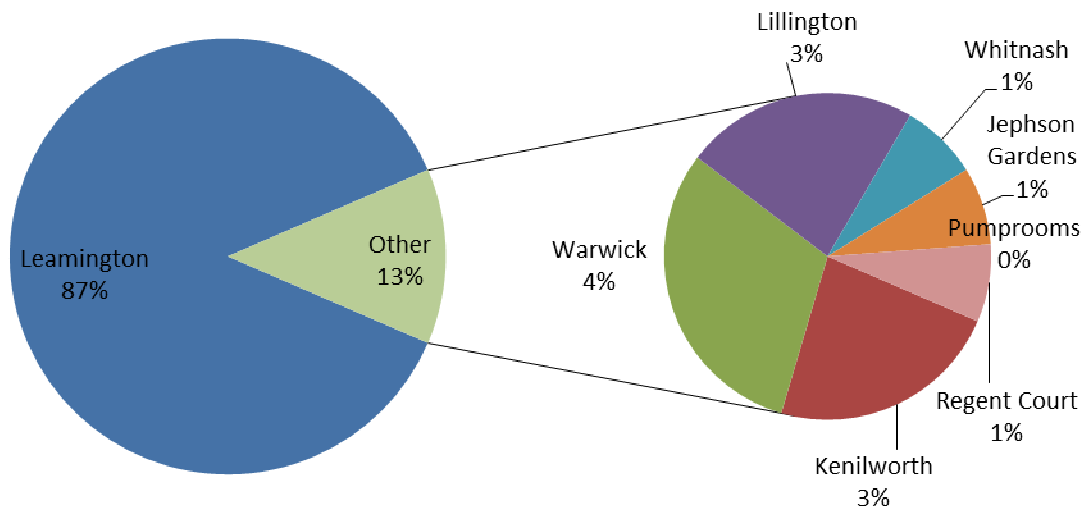
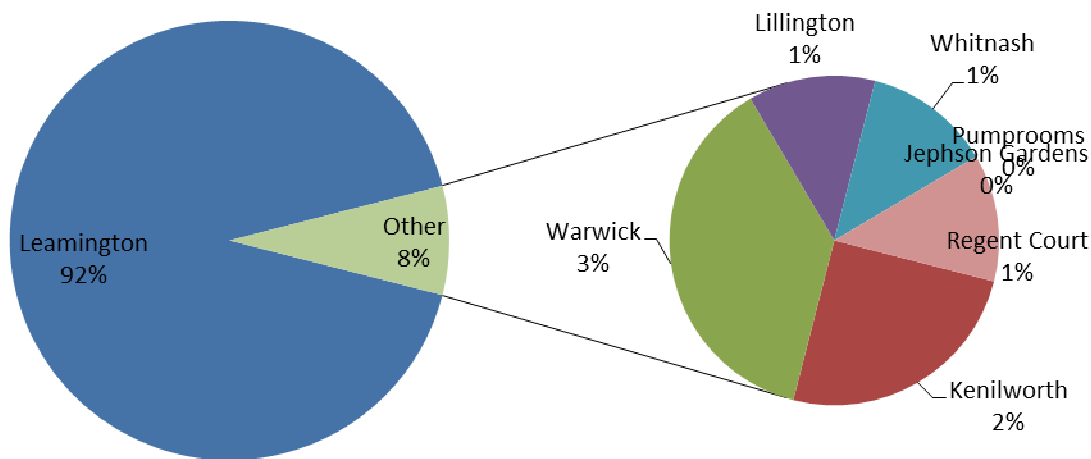


Chart Location - All Incidents 2014



The spread of all incidents across Warwick District has not changed greatly over the five years although there has been an increasing proportion in central Leamington Spa.

Chart Location - All Major Incidents 2008

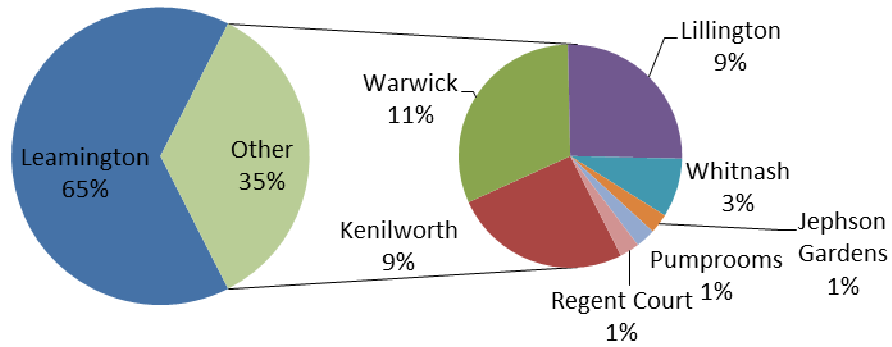
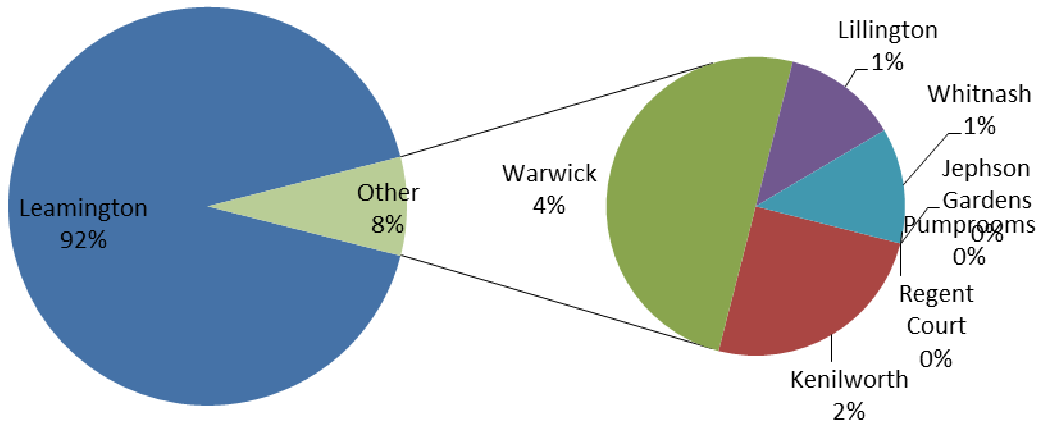
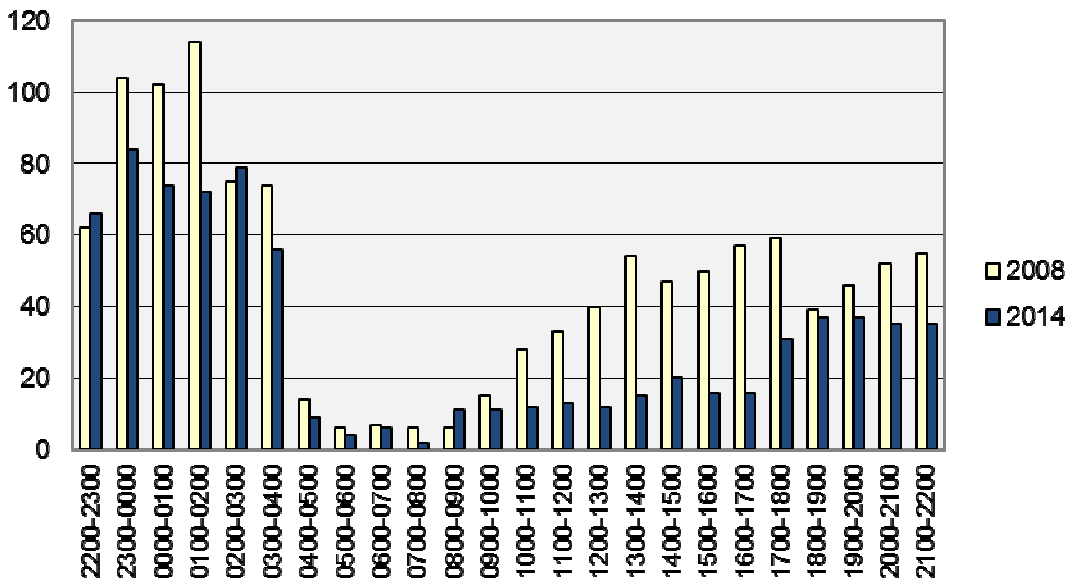


Chart Location - All Major Incidents 2014



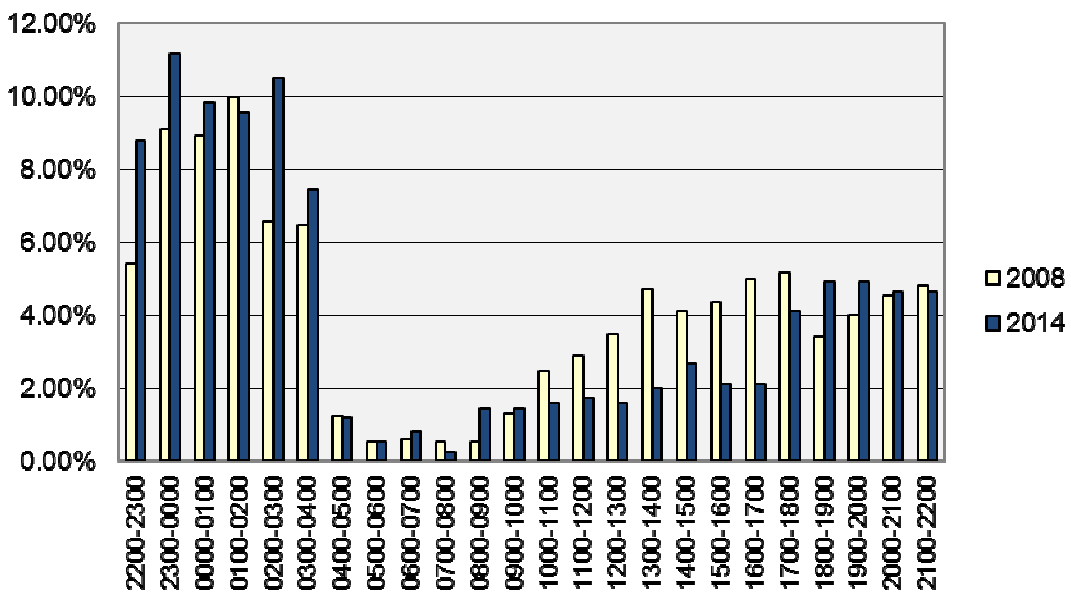
Major Incidents are significantly more concentrated in central Leamington Spa than they were five years ago.

Chart 3 - Major Incidents by Hour - 2008/2014



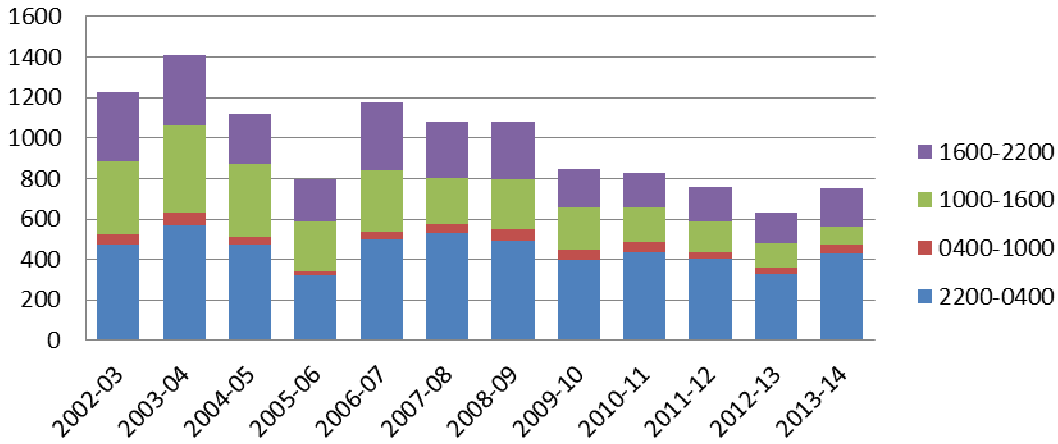
There has been a reduction in incidents across the 24 hour period

Chart 3a - Percentage of Major Incidents by Hour 2008/2014



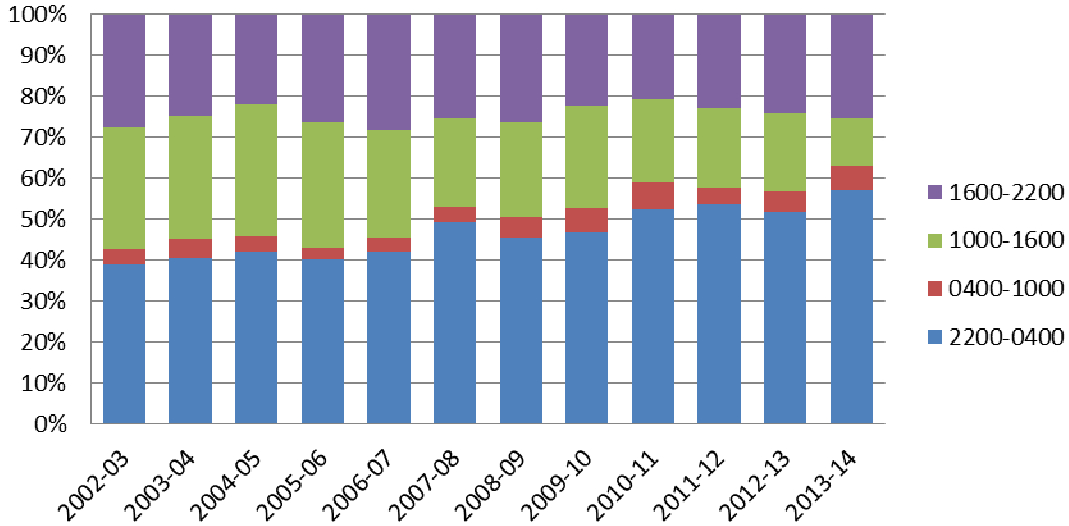
However a greater percentage of Major incidents now occur during the late evening and a smaller percentage in the afternoon than five years ago.

Major Incidents by Time of Day



The time of day distribution is clearly seen by considering 6-hour blocks.

Major Incidents by Time of Day - Percentage



The increasing proportion during the 2200-0400 hours period is emphasised by plotting as percentages

Chart 4 - Initiation Source of Incidents - 2008

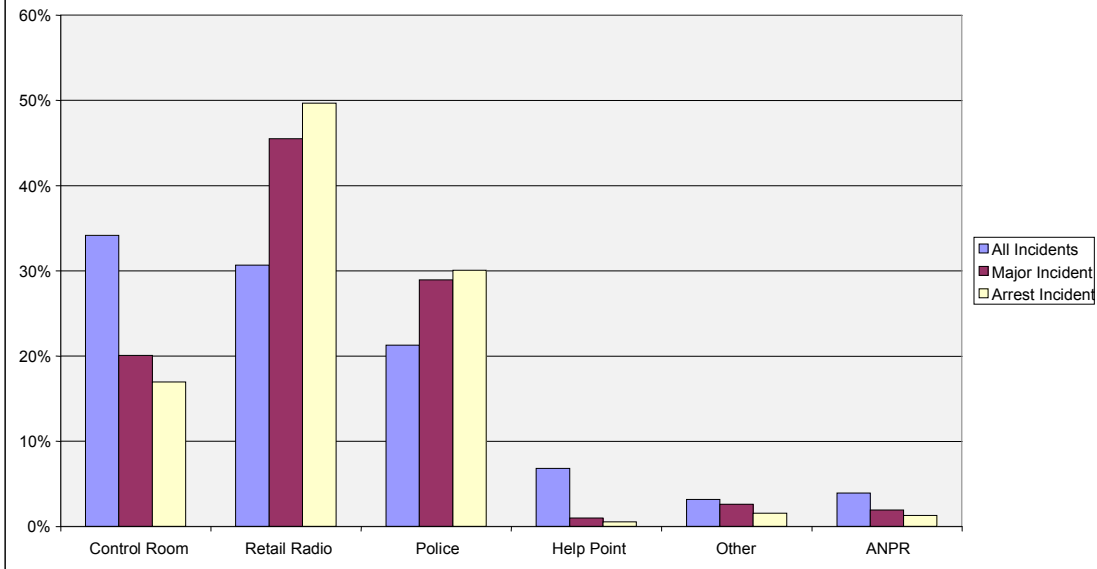
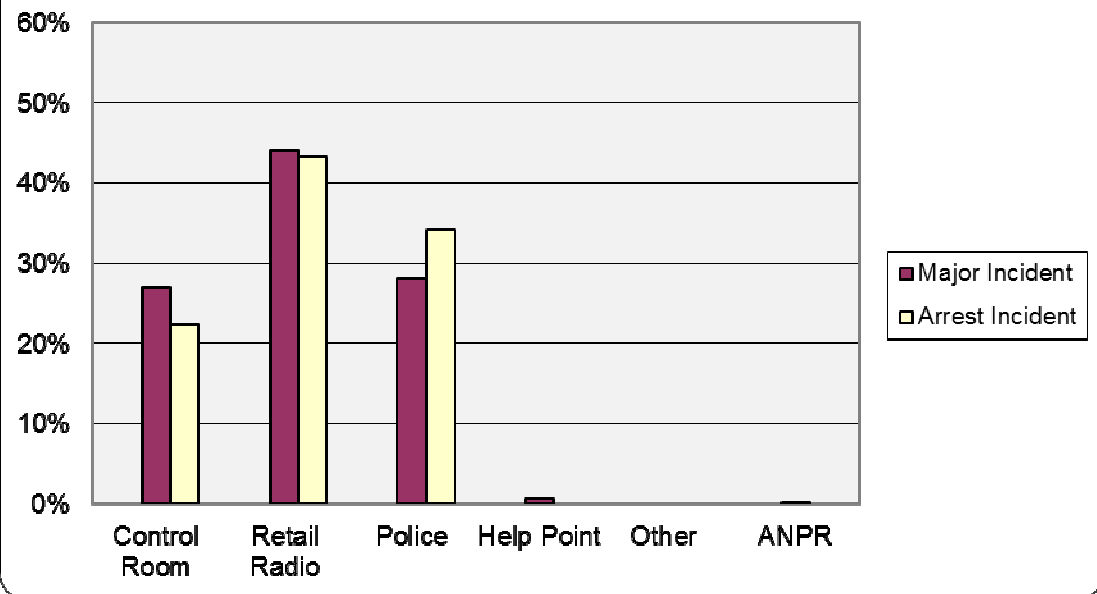


Chart 4 - Initiation Source of Incidents - 2014



The initiation source of major incidents is very similar to five years ago, with Retail Radio playing a crucial role.

The data for all incidents is not readily available for the last year.