

Community Safety Performance Monitoring Report

South Warwickshire

2013/14 Report – Year End

1a. Performance – South Warwickshire

VIOLENT CRIME Local Indicators	2012/13 Baseline	2013/14 Target	Year End 2013/14	Change on Baseline	Status vs Target
Violent Crime (All Offences)	2,207	2,206	2,172	- 2%	G
Serious Violent Crime	1,073	-	1,052	- 2%	-
<i>Most Serious Violence</i>	136	-	102	- 25%	-
<i>Assault Less Serious Injury</i>	955	-	950	- 0.5%	-
ACQUISITIVE CRIME Local Indicators	2012/13 Baseline	2013/14 Target	Year End 2013/14	Change on Baseline	Status vs Target
Serious Acquisitive Crime	2,348	-	2,290	- 2%	-
<i>Domestic Burglary</i>	731	-	679	- 7%	-
<i>Robbery</i>	95	-	84	- 12%	-
<i>Theft from Vehicle</i>	1,258	-	1,342	+ 7%	-
<i>Theft of Vehicle</i>	264	-	185	- 30%	-
ANTI-SOCIAL BEHAVIOUR Local Indicators	2012/13 Baseline	2013/14 Target	Year End 2013/14	Change on Baseline	Status vs Target
Anti-Social Behaviour Incidents (All)	8,179	8,178	7,701	- 6%	G
<i>Personal</i>	1,934	-	1,867	- 3%	-
<i>Nuisance</i>	5,756	-	5,412	- 6%	-
<i>Environmental</i>	489	-	422	- 14%	-
Criminal Damage	1,802	-	1,649	- 8%	-
Deliberate Small Fire Incidents (Arson)*	70	-	92	+ 31%	-
TOTAL RECORDED CRIME	12,353	-	11,600	- 6%	-

Source: Warwickshire Police

Note: * Deliberate Small Fire incidents reported to Warwickshire Fire & Rescue Service

Green = below target

Red = above target

1b. Performance – Stratford District

VIOLENT CRIME Local Indicators	2012/13 Baseline	2013/14 Target	Year End 2013/14	Change on Baseline
Violent Crime (All Offences)	787	-	795	+ 1%
Serious Violent Crime	419	-	395	- 6%
<i>Most Serious Violence</i>	46	-	39	- 15%
<i>Assault Less Serious Injury</i>	382	-	356	- 7%
ACQUISITIVE CRIME Local Indicators	2012/13 Baseline	2013/14 Target	Year End 2013/14	Change on Baseline
Serious Acquisitive Crime	1,001	-	1,053	+ 5%
<i>Domestic Burglary</i>	238	-	277	+ 16%
<i>Robbery</i>	26	-	22	- 15%
<i>Theft from Vehicle</i>	622	-	665	+ 7%
<i>Theft of Vehicle</i>	115	-	89	- 23%
ANTI-SOCIAL BEHAVIOUR Local Indicators	2012/13 Baseline	2013/14 Target	Year End 2013/14	Change on Baseline
Anti-Social Behaviour Incidents (All)	3,274	-	2,906	- 11%
<i>Personal</i>	789	-	686	- 13%
<i>Nuisance</i>	2,288	-	2,055	- 10%
<i>Environmental</i>	197	-	165	- 16%
Criminal Damage	696	-	641	- 8%
Deliberate Small Fire Incidents (Arson)*	8	-	22	+ 175%
TOTAL RECORDED CRIME	5,153	-	5,070	- 2%

Source: Warwickshire Police

Note: * Deliberate Small Fire incidents reported to Warwickshire Fire & Rescue Service

Green = below target
Red = above target

1c. Performance – Warwick District

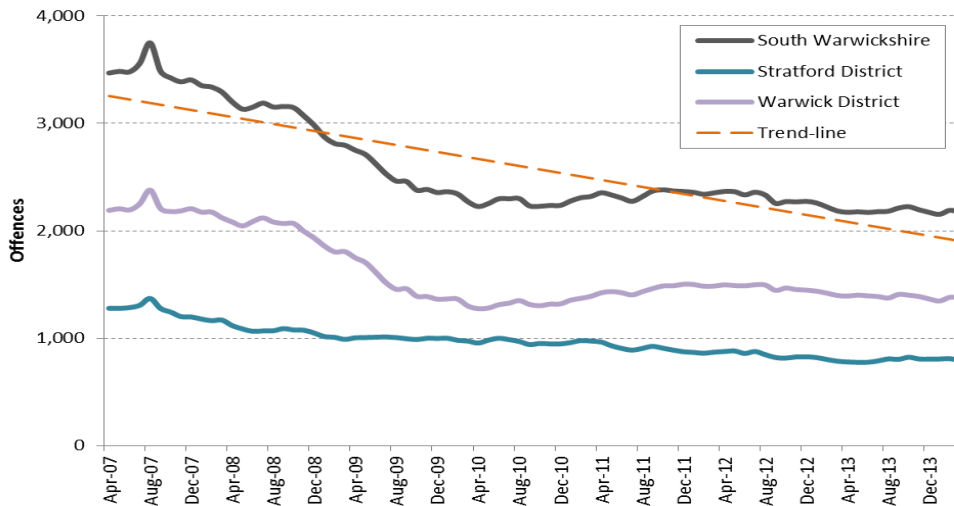
VIOLENT CRIME Local Indicators	2012/13 Baseline	2013/14 Target	Year End 2013/14	Change on Baseline
Violent Crime (All Offences)	1,399	-	1,377	- 2%
Serious Violent Crime	654	-	657	+ 0.5%
<i>Most Serious Violence</i>	89	-	63	- 29%
<i>Assault Less Serious Injury</i>	574	-	594	+ 3%
ACQUISITIVE CRIME Local Indicators	2012/13 Baseline	2013/14 Target	Year End 2013/14	Change on Baseline
Serious Acquisitive Crime	1,343	-	1,237	- 8%
<i>Domestic Burglary</i>	492	-	402	- 18%
<i>Robbery</i>	68	-	62	- 9%
<i>Theft from Vehicle</i>	633	-	677	+ 7%
<i>Theft of Vehicle</i>	150	-	96	- 36%
ANTI-SOCIAL BEHAVIOUR Local Indicators	2012/13 Baseline	2013/14 Target	Year End 2013/14	Change on Baseline
Anti-Social Behaviour Incidents (All)	4,905	-	4,795	- 2%
<i>Personal</i>	1,145	-	1,181	+ 3%
<i>Nuisance</i>	3,468	-	3,357	- 3%
<i>Environmental</i>	292	-	257	- 12%
Criminal Damage	1,100	-	1,008	- 8%
Deliberate Small Fire Incidents (Arson)*	62	-	70	+ 13%
TOTAL RECORDED CRIME	7,200	-	6,530	- 9%

Source: Warwickshire Police

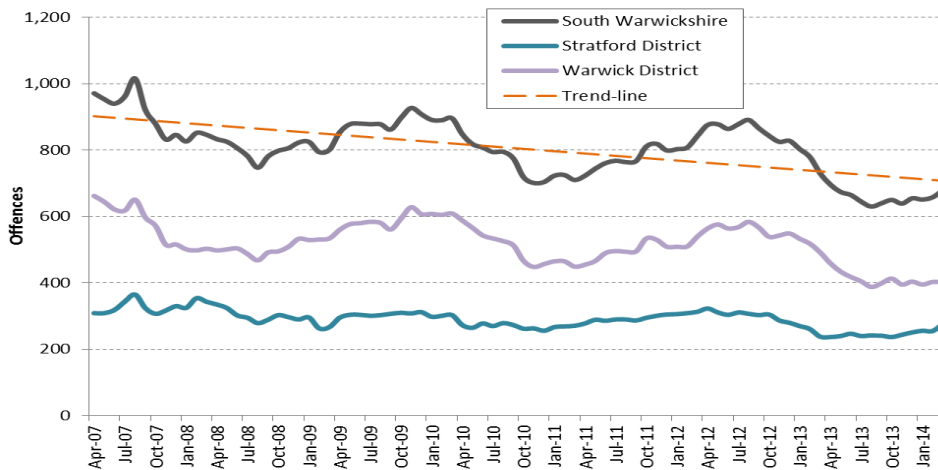
Note: * Deliberate Small Fire incidents reported to Warwickshire Fire & Rescue Service

Green = below target
Red = above target

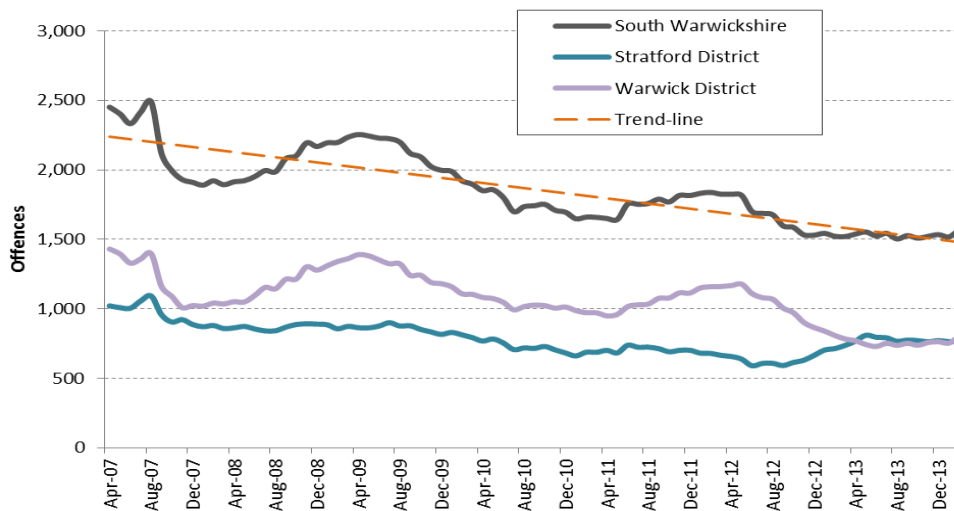
South Warwickshire Violent Crime – 12 Month Rolling Trend Chart



South Warwickshire Domestic Burglary - 12 Month Rolling Trend Chart



South Warwickshire Vehicle Crime - 12 Month Rolling Trend Chart

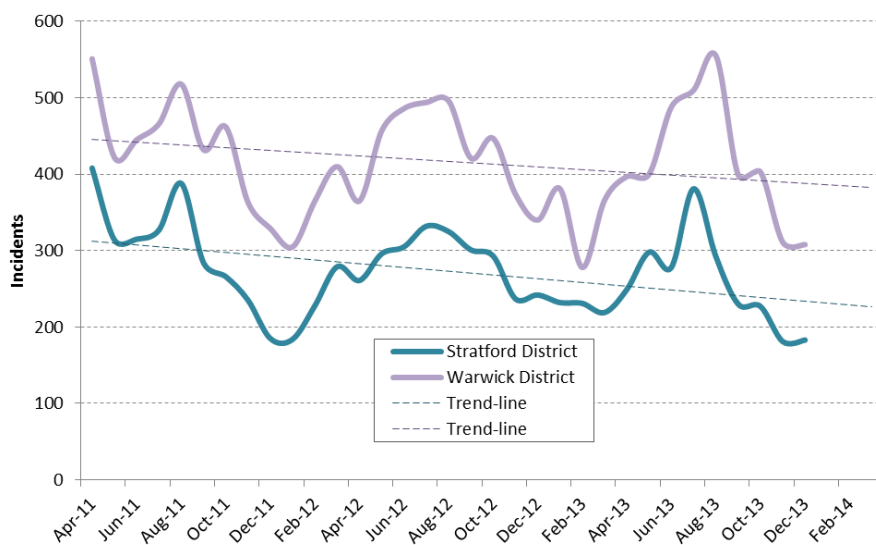


Source: Warwickshire Police

2. Anti-Social Behaviour

Incidents	2012/13 Baseline	Year End 2013/14	Change on Baseline
<i>Environmental</i>	489	422	- 14%
<i>Nuisance</i>	5,756	5,412	- 6%
<i>Personal</i>	1,934	1,867	- 3%
Total Anti-Social Behaviour Incidents	8,179	7,701	- 6%

Trend Chart – Anti-Social Behaviour Incidents: by District

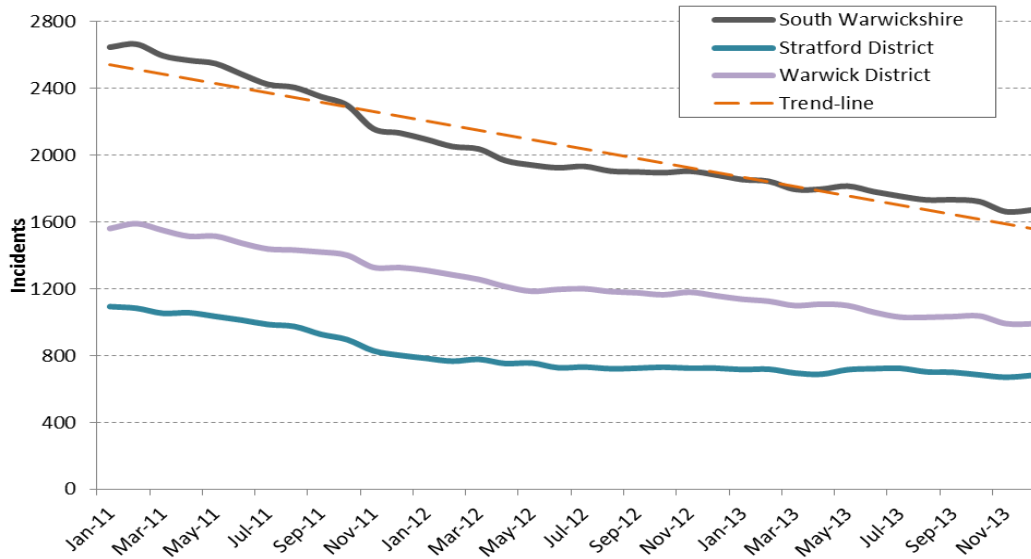


Source: STORM Incident System, Warwickshire Police

3. Criminal Damage

Crimes	2012/13 Baseline	Year End 2013/14	Change on Baseline
Criminal Damage Offences	1,802	1,649	- 8%

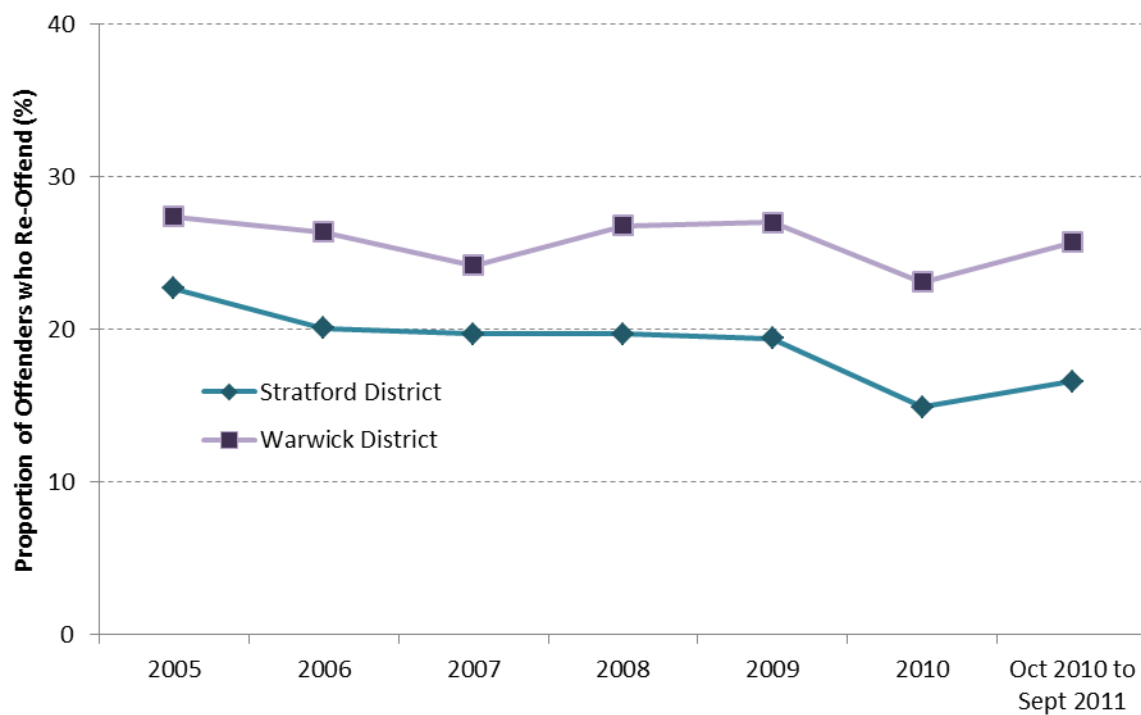
Criminal Damage Offences - 12 Month Rolling Trend Chart



Source: Warwickshire Police

4. Re-Offending

Proven re-offending of adult and juvenile offenders January 2005 to September 2011



Source: Ministry of Justice

5. IQanta – Benchmarking Performance

Comparison to Most Similar Groups – Iqanta

15 members of Most Similar Group

1 = Good Performance 15 = Bad Performance

Crime Type	IQanta Rank (March 13 – Feb 14)	Rate Per 1000 Pop (March 13 – Feb 14)	Avg of Most Similar Gp	IQanta Rank (YE 12/13)	Rate Per 1000 Pop (YE 12/13)	STATUS (Has last 12 months (to Feb 14) ranking improved on YE position?)
Criminal Damage	6 th	6.19	6.70	7 th	6.70	BETTER
Domestic Burglary	7 th	5.96	6.48	9 th	6.61	BETTER
Robbery	12 th	0.33	0.26	12 th	0.37	SAME
Serious Acquisitive Crime	13 th	8.90	7.20	15 th	9.08	BETTER
Vehicle Crime	14 th	6.03	4.26	15 th	5.89	BETTER
Violent Crime	5 th	8.58	10.41	6 th	8.54	BETTER
Total Recorded Crime	8 th	45.20	45.68	9 th	47.90	BETTER

Source: IQanta

6. Further Information

This is the latest overview of recorded crime and disorder statistics. The report is produced for the use of Warwickshire Community Safety Partnerships and the agencies within those Partnerships. The figures should not be reproduced outside of the Partnerships without permission from the owners of the statistics. Report produced by Warwickshire Observatory.

Sources: Warwickshire Police and Warwickshire County Council, Warwickshire Observatory

Produced by the Warwickshire Observatory for the Community Safety Partnerships, not to be reproduced without permission.