 Health and Wellbeing Sub Committee		Agenda Item No. 8
Title	Dementia Friendly Communities	
For further information about this report please contact	Rob Chapleo Tel: 6707 Email: rob.chapleo@warwickdc.gov.uk	
Wards of the District directly affected	All wards	
Is the report private and confidential and not for publication by virtue of a paragraph of schedule 12A of the Local Government Act 1972, following the Local Government (Access to Information) (Variation) Order 2006?	No	
Date and meeting when issue was last considered and relevant minute number	N/A	
Background Papers	None	

Contrary to the policy framework:	No
Contrary to the budgetary framework:	No
Key Decision?	No
Included within the Forward Plan? (If yes include reference number)	No
Equality and Sustainability Impact Assessment Undertaken	No

Officer/Councillor Approval		
Officer Approval	Date	Name
Chief Executive/Deputy Chief Executive		SMT
Head of Service	24.08.2016	Marianne Rolfe
CMT		SMT
Section 151 Officer		
Monitoring Officer		
Finance		
Portfolio Holder(s)		Cllr Mrs Grainger
Warwickshire Legal Services		N/A
Consultation & Community Engagement		
Final Decision?		Yes
Suggested next steps (if not final decision please set out below)		

1 SUMMARY

- 1.1 The Committee will recall that the Council is committed to the Warwickshire Dementia Action Alliance. The purpose of this report is to outline the action plan for the Council to achieve **dementia-friendly communities recognition**.
- 1.2 All communities that register for the dementia-friendly communities' recognition process will be formally working towards meeting the foundation criteria for being dementia friendly.
- 1.3 A community that registers for the recognition process is committing to taking each of the foundation criteria and interpret them from a local perspective to fit the size, type, stage of progression and resource, and describe what they are working towards and the actions they intend to take.
- 1.4 The foundation criteria have been developed from feedback from a number of stakeholders and communities that are becoming dementia friendly to act as a basis from which to develop local plans and a report back on progress against them will be expected.

2 RECOMMENDATIONS

It was recommended:

- 2.1 That this authority contributes where it can to an agenda of:
 - Shaping communities around the views of people with dementia and their carers
 - Challenging stigma and building awareness
 - Ensuring that activities include people with dementia
 - Empowering people with dementia and recognising their contribution
 - Ensuring early diagnosis, personalised and integrated care is the norm
 - Befrienders helping people with dementia engage in community life
 - Maintaining independence by delivering community- based solutions
 - Appropriate transport
 - Easy to navigate physical environments
 - Businesses and services that respond to customers with dementia
- 2.2 The Local Government Association advise that recognition will come from:

- Ensuring the right local structure is in place to maintain a sustainable dementia friendly community
- Identifying a person to take responsibility for driving forward the work to support a community to become dementia friendly
- Having a plan in place to raise awareness about dementia in key organisations and businesses within the community that support people with dementia
- Developing a strong voice for people with dementia living in communities
- Raising the profile of the work to increase reach and awareness to different groups in the community
- Focusing plans on a number of key areas that have been identified locally
- Having in place a plan or system to update the progress of the community.

2.2 It is recommended therefore that the Council:

Establishes a steering group which meets every quarter to:

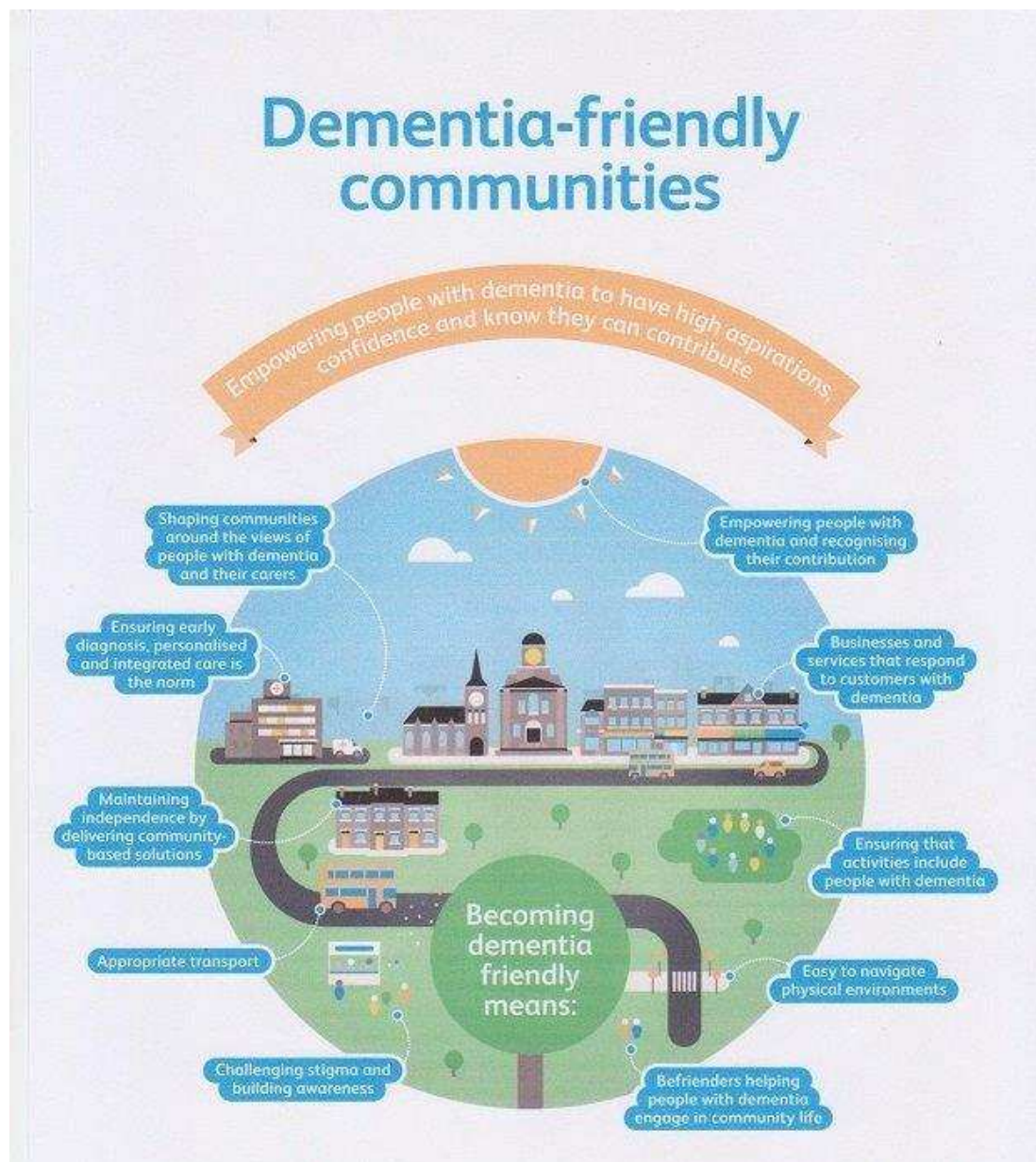
- Recommend ways in which the Council will become more Dementia Friendly
- Review performance of the departments in delivering the outcomes of the action plan

The group will be Chaired and staffed by colleagues who have a good overview of their Departments' functions, the authority and capacity to deliver agreed actions.

3 **REASONS FOR THE RECOMMENDATIONS**

3.1 Dementia Friendly Communities can be characterised as follows:

"A city, town or village where people with dementia are understood, respected and supported, and confident they can contribute to community life. In a dementia friendly community people will be aware of and understand dementia, and people with dementia will feel included and involved, and have choice and control over their day-to-day lives"



4 POLICY FRAMEWORK

4.1 Sustainable Community Strategy

The Strategy has the following aim:

To enable and encourage the people of Warwick District to have an equal access to a healthy life and sense of wellbeing, ensuring that our actions are aligned with the Warwickshire Health & Wellbeing Board's Strategy.

The priorities:

To make every contact count (MECC) in recognising that the Council has many opportunities to impact on people's mental and physical health and wellbeing

4.2 Fit for the Future

This policy contributes to making Warwick District *a great place to live work and visit* and secondly, it contributes to the 'People' strand of strategy. It does this by reinforcing the Council's positive attitude to the Health & Wellbeing of its workforce and public. It compliments, contributes to and does not duplicate the Health & Wellbeing Strategy at county level.

4.3 Warwickshire Joint Strategic Needs Assessment

Dementia is a priority topic of the County's JSNA. Diagnosis rates for dementia have been historically low, meaning many people have not received appropriate treatment to manage their condition. There are 4,143 registered patients diagnosed with dementia in Warwickshire. However, there are an estimated 7,634 individuals in Warwickshire with dementia, both diagnosed and undiagnosed. This gives an estimated dementia diagnosis rate of 54.3% for Warwickshire.

Clinical Commissioning Group	Number Diagnosed	Estimated Prevalence	Diagnosis Rate
Coventry & Rugby CCG	2,831	5,086	55.7%
South Warwickshire CCG	2,206	4,134	53.4%
Warwickshire North CCG	1,232	2,219	55.5%
NHS England	415,964	684,371	60.8%

NHSE Primary Care Webtool

Source: Warwickshire JSNA

Up to 2020, the prevalence of dementia is projected to increase by 18% in those aged 65 and over. The largest projected increase is in Stratford-on-Avon District (20.4%) in those aged 65 and over, followed by Rugby Borough (18.4%). The prevalence of dementia in those aged 65 and over is projected to grow at a faster rate in Warwickshire than the West Midlands (15.2%) and England (14.8%) equivalents. In England, it is projected that there will be over 100,000 more dementia patients in 2020, than in 2015. The Public Health Outcomes Framework suggests that in England, the estimated diagnosis rate is 52.8% (2013/14), which is comparable to the Warwickshire rate (54.3%). Currently just over half of the people living with dementia in Warwickshire have received a diagnosis, but an early diagnosis can be very important in ensuring that people are able to maintain the quality of life that they had previously

enjoyed and have access to appropriate support and services. Although dementia is incurable, early diagnosis can allow access to medications that can be used to effectively slow down the progression of the illness. Dementia is known to be more prominent amongst females, a trend which is expected to continue in the future. However, below the age of 75, the prevalence appears to be slightly higher in males than females. Prevalence of dementia is higher in absolute numbers, in the south of the county; this is due to having a larger and older population.

4.4 Joint Working

A recent peer review of WDC revealed:

'There is a commitment to work with partners to address priorities, and some good examples of joint delivery'.

Membership of the County's Dementia Action Alliance and shared delivery of the Dementia Friends initiative, to train staff in awareness, is one such example.

'The linkage between the SCS priorities, the financial strategy, FFF and other emerging strategies is not explicit. In the absence of explicit outcomes, finance is the key driver'.

The delivery model suggested by this plan seeks to address this perceived disconnect. It articulates why it is a priority for WDC and the outcomes sought, using stakeholders to inform priorities and service improvements.

The actions will be delivered across Departmental functions and the expected outcomes will be narratives of our improved performance expressed by key stakeholders, notably those residents living with the disease.

4.3 Impact Assessments

There are no new or significant policy changes proposed in respect of Equalities, but positive Health Impact is expected.

5 BUDGETARY FRAMEWORK

- 5.1 There are minimal financial implications. The recommendations include a mechanism to ensure a community focus of current services to enable one sector of health inequality to be properly provided for.

6 RISKS

6.1 None anticipated.

7 ALTERNATIVE OPTION(S) CONSIDERED

7.1 To not take steps to become a Dementia Friendly community and retain the one size fits all model. Unfortunately this approach would not allow us to react proactively to the predicted impending Dementia crisis.

8 BACKGROUND

8.1 See 13th January 2015 Report to Executive – ‘Dementia Action Alliance’

REFERENCES

Building Dementia Friendly Communities – a Priority for Everyone –
Alzheimer’s Society 2013

www.alzheimers.org.uk/site/scripts/documents_info.php?documentID=2283

Dementia Friendly Communities. LGA. July 2015

<http://www.local.gov.uk/documents/10180/7058797/L15-238+Dementia+friendly+communities+guidance+for+councils/7acaa658-329e-4aa1-bdff-ef6a286dd373>