

C&W LEP	Governance & Terms of Reference
--------------------	--

Chairman:

Denys Shortt (dcs europe)

Board Composition:

The Chair will be a Business Leader, a deputy will be elected from other business leader members

Business Leaders will have **5** seats

Civic leaders will have **5** seats

The University of Warwick will have **1** seat

Coventry University will have **1** seat

Each Board member will have a named alternate

Term of Office:

The Chair and Board will serve a term of 2 years before re-election and a maximum of 2 consecutive terms.

Purpose:

To deliver the vision outlined in the LEP proposition:-

'To make our area (Coventry and Warwickshire) a World Class economy in which to do business; a place to lead a great life; excel at learning; visit and return to - all supported by exceptional private, public and voluntary services.'

Focus and key activities:

- Remove barriers and facilitate the **growth** of our business base.
- Stimulate new and sustainable **jobs** and ensure our residents are fully equipped with the skills and attitudes to exploit these opportunities.
- Strengthen and support **innovation**.
- Secure **economic diversity** by making the sub-national economy more balanced and more resilient.
- Be the **voice** of the economy with strong business engagement.
- Guide, shape and inform the wider issues in the sub-region that are critical to creating the right conditions for growth.
- Strongly influence decisions in areas such as:-
 - Planning
 - Transport – develop a coordinated approach to transport both within and across boundaries of the LEP area
 - Housing

- Minimising Bureaucracy
- Education & Skills

Specific Areas of Activity:

- Stimulating Innovation in the Sub-Region
- Reducing Carbon Emissions
- Co-ordinated Service for Business
- Raising Aspiration
- Addressing the Employment Gap
- Future Skills
- Improving the Connectivity of the Sub-Region
- Tackling Worklessness
- Coventry City Centre

Accountability:

The Board is accountable to the people, businesses and stakeholders of Coventry and Warwickshire.

Principles:

- Decisions will be taken by consensus
- Decisions taken at the Board are binding on members and the organisations they represent

Meeting Frequency & Quorum:

There will be a minimum of 4 Board meetings per annum.
In the event of a quorum being required it will be a minimum of 3 business and 3 local authority Board members.

Support:

Staff

Roger Dowthwaite (CSWP)
Louise Bennett (C&W Chamber)
Louise Wall (Warwickshire County Council)
Martin Reeves/Paula Deas (Coventry City Council)
Chris Elliott/tba
Other staff (including Universities and Civic Society) as required

Other support

- The LEP Board will establish (and disband) reference groups and advisory councils (e.g. The Business and Innovation Councils) which will support the work of the LEP Board to achieve the objectives of the LEP.
- The LEP Board will commission and delegate responsibility to whatever groups it needs to advise and inform the LEP Board (e.g.

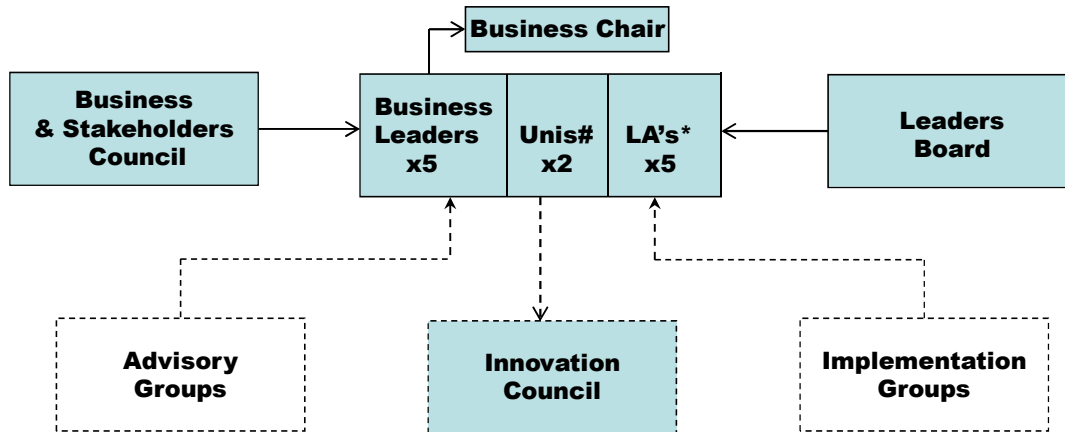
the Business & Stakeholders Council and Innovation Council).

Full Board Member list (alternate's tba):

Denys Shortt	Chairman& Chief Executive - dcs europe
Cllr John Mutton	Leader Coventry City Council
Cllr Alan Farnell	Leader Warwickshire County Council
Cllr Alan Cockburn	Cabinet Member Warwickshire County Council
Cllr Linda Bigham	Cabinet Member Coventry City Council
Cllr Craig Humphrey	Leader Rugby Borough Council
Sir Peter Rigby	Chairman & Chief Executive - SCH/Eden Hotel Collection/Patriot Aerospace Group
Daniel Gidney	Chief Executive - Ricoh Arena
Martyn Hollingsworth	Director – Jaguar Land Rover
Derek Parkin	Managing Director of Business Services and Executive Director, E.ON UK plc
Nigel Thrift	Vice-Chancellor University of Warwick
John Latham	Deputy Vice-Chancellor Coventry University

Review Date: As and when required but not more than 12 months

BOARD COMPOSITION



University of Warwick and Coventry University one each

- Leaders Board nominates 'Local Authority' (2x CCC, 2x WCC, 1x District/Boroughs)

----- Arrangements to be introduced