

DRAFT

South Warwickshire Place Development

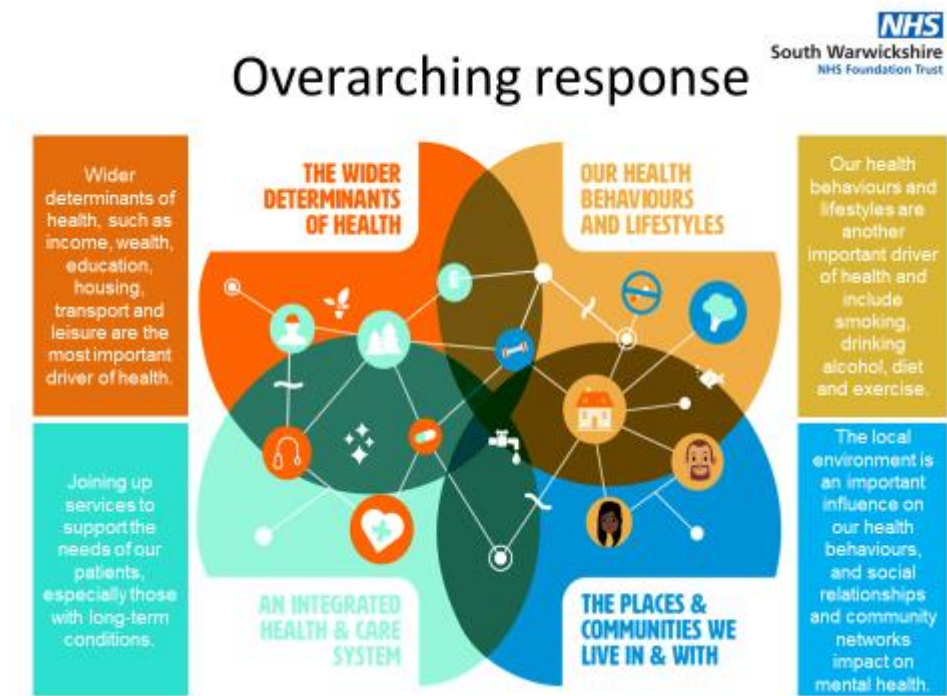
Background

The development of South Warwickshire Place governance arrangements are a key aspect in maturing the development of South Warwickshire Place.

This proposal recommends the establishment of a single meeting board through the merger of Place Partnership Board and South Warwickshire Healthy Citizen's Forum by April 2022, which will ensure:

- Linkages into the wider system and relationships with HWBB, ICS,
- The patient/public voice is at the heart of what we do
- The strengthening of decision making at SW Place
- The review and consolidation of meetings

As we work collectively in South Warwickshire Place, a population health plan will be developed which reflects the Kings Fund four quadrants for health and social care as detailed below:



The LGA have been engaged to deliver a series of workshops over the summer to map agreed priorities for each quadrant by:

- Identifying collectively what we are doing
- Identifying gaps
- Identifying key actions

This will then be used to develop a population health SW plan based on priorities mapped against the four quadrants of the Kings Fund model and on feedback from public/patients.

Appendix A details an outline work plan to develop a population health South Warwickshire Place Plan and subsequently merge the South Warwickshire Healthy Citizen's meeting with South Warwickshire Place Partnership Board.

Appendix A

Implementation work plan content

Ref	Activity	Who	By When
1. Proposal to develop population health SW Place plan sign off			
a.	Present proposal for development of Population Health SW Place plan to <ul style="list-style-type: none"> • SW Place Partnership Board • SW Healthy Citizen's Forum 	Anne Coyle Chris Elliot	March 2021 April 2021
2. Review headline priorities of HWB strategy and partnership priorities against quadrant 3 of Kings Fund model			
a.	Review HWB headline priorities and SW partnership priorities and map them against quadrant 3 'Integrated Health and Care system'	Anne Coyle Chris Elliot	April 2021
b.	Present HWB priorities and SW priorities mapped against quadrant 3 to Place Partnership Board and Healthy Citizen's Forum for sign off	Anne Coyle Chris Elliot	May 2021

3. LGA Facilitated Workshops and development of patient/public engagement plan			
a	Arrange series of LGA workshops and map agreed priorities for each quadrant: <ul style="list-style-type: none"> • Identify collectively what we are doing • Identify gaps • Identify key actions 	Anne Coyle Chris Elliot Marcus Coulson	May –July 2021
b.	Development of public/patient engagement plan	Engagement and communications	July – August 2021
c.	Present draft outcomes of workshops and engagement plan to Place Partnership Board and Healthy Citizen’s Forum	Anne Coyle Chris Elliot	August 2021
4. Develop population health SW Place plan and supporting financial plan			
a.	Implementation of public/patient engagement plan on outcomes from the LGA facilitated workshops	Communications and Engagement teams	August – September 2021
a.	Development of population health SW plan based on priorities mapped against the four quadrants of the Kings Fund model and on feedback from public/patients	Anne Coyle Chris Elliot	October – November 2021

b.	Development of financial plan to deliver priorities within agreed financial envelope	Directors of Finance	November – December 2021
c.	Develop measurement of outputs and outcomes: <ul style="list-style-type: none"> • KPIs • Impact on people's care 	Intelligence Cell	October – December 2021
d.	Present Population health SW Place plan, Financial plan and performance measures for sign off: <ul style="list-style-type: none"> • Place Partnership Board • Healthy Citizens Forum 	Anne Coyle Chris Elliot	January 2022
d.	Development of new Terms of Reference and infrastructure arrangements to deliver the plan <ul style="list-style-type: none"> • Ensure TOR reflect 4 quadrants of Kings Fund model and aren't too NHS focussed 	Anne Coyle Chris Elliot	January – February 2022
e.	Present new Terms of Reference and infrastructure arrangements for sign off: <ul style="list-style-type: none"> • Place Partnership Board • Healthy Citizen's Forum 	Anne Coyle Chris Elliot	March 2022
5. New meeting arrangements in place			
a	New meeting arrangements in place as Healthy People and Place Partnership Board are merged	Anne Coyle/Place Partnership Board	April 2022

Risks and mitigation

Ref	Risk	Mitigation
1.	Insufficient funding to deliver priorities	Clear understanding of financial envelope to deliver priorities and agreement to develop new models of care and new ways of working within agreed financial envelope
2.	Patient /Public voice is not heard nor is it centre to planning	Robust inclusive engagement plan developed and implemented
3.	Unable to get agreement from partners re priorities for population health SW plan	Ensure engagement and ownership of priorities and population health plan with partners through: <ul style="list-style-type: none"> • LGA facilitated work shops • robust communications and engagements at Place partnership Board and Healthy Citizen's Forum
4.	Lack of dedicated resource to deliver the population health SW plan	Agreement across the partnership to identify resources for delivery
5	Inability to demonstrated improved patient outcomes	Robust performance measurement and monitoring to determine impact on improving outcomes
6.	Potential for new board to be too NHS focussed	Strengthen new Terms of Reference to reflect all 4 quadrants of Kings Fund model and ensure social care etc have an equal voice

Recommendation:

The Place Partnership Board and Healthy Citizen's Forum are asked to agree:

1. The approach to the development of the population health plan as outlined in this proposal
2. The merging of the SW Place Partnership Board and SW Healthy Citizen's Forum by April 2022.