

Appendix J – Influence of Rapid Chargers within selected South Warwickshire car parks

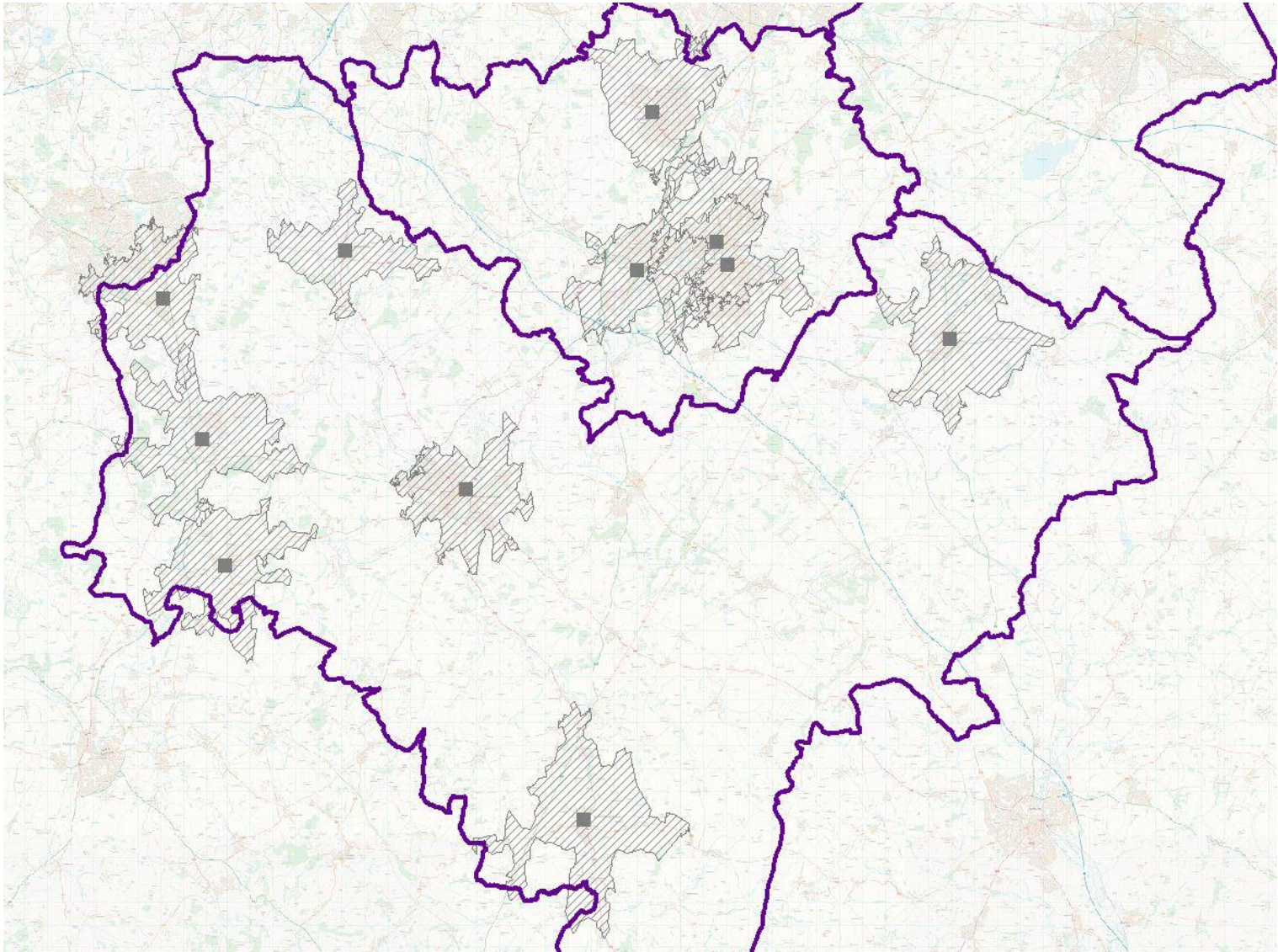


Fig. 1 – Number of properties influenced by each car park

Name of car park	No. of properties without off-street parking within a 10-minute drive
Wood Street, Southam	2470
Chandos Street, Leamington	20225
Court Street, Leamington	18431
New Street, Warwick	20314
Square West, Kenilworth	13789
Henley in Arden	1448
Studley	2204
Alcester	3691
Bidford on Avon	2499
Stratford Town	7973
Shipston upon Stour	1852