



Design options

Leisure Development Programme
Phase Two
Kenilworth facilities

Warwick District Council and Mace
September 2018

Introduction and Context

Introduction & Context



This options document shows the early design ideas for the development of the Castle Farm Recreation Centre and the Abbey Fields Swimming Pool sites.

The purpose of the document is to show the options that will be presented to stakeholders, user groups and the general public for their comments and preferences.

The feedback from the consultation process will be combined with financial, planning, operational and other considerations in order to decide on the design options to take forward to the next stage of the design process.

There are a number of options for each site. The options are shown in summary on the next slide, and then each option is illustrated on the following slides.

Summary of options

Summary of options



The options will be presented to the public in the following manner -

Castle Farm

- **Option CF1 – New dry-side leisure centre**

An entirely new sports hall, gym, studios and related 'dry-side' facilities is constructed at Castle Farm. The Scouts are re-located elsewhere

OR

- **Option CF2 – New dry-side facilities with Scouts**

The new 'dry-side' facilities are accompanied by a separate building for the Scouts on the Castle Farm site

AND

Abbey Fields

- **Option AF1 - Enhanced water facilities**

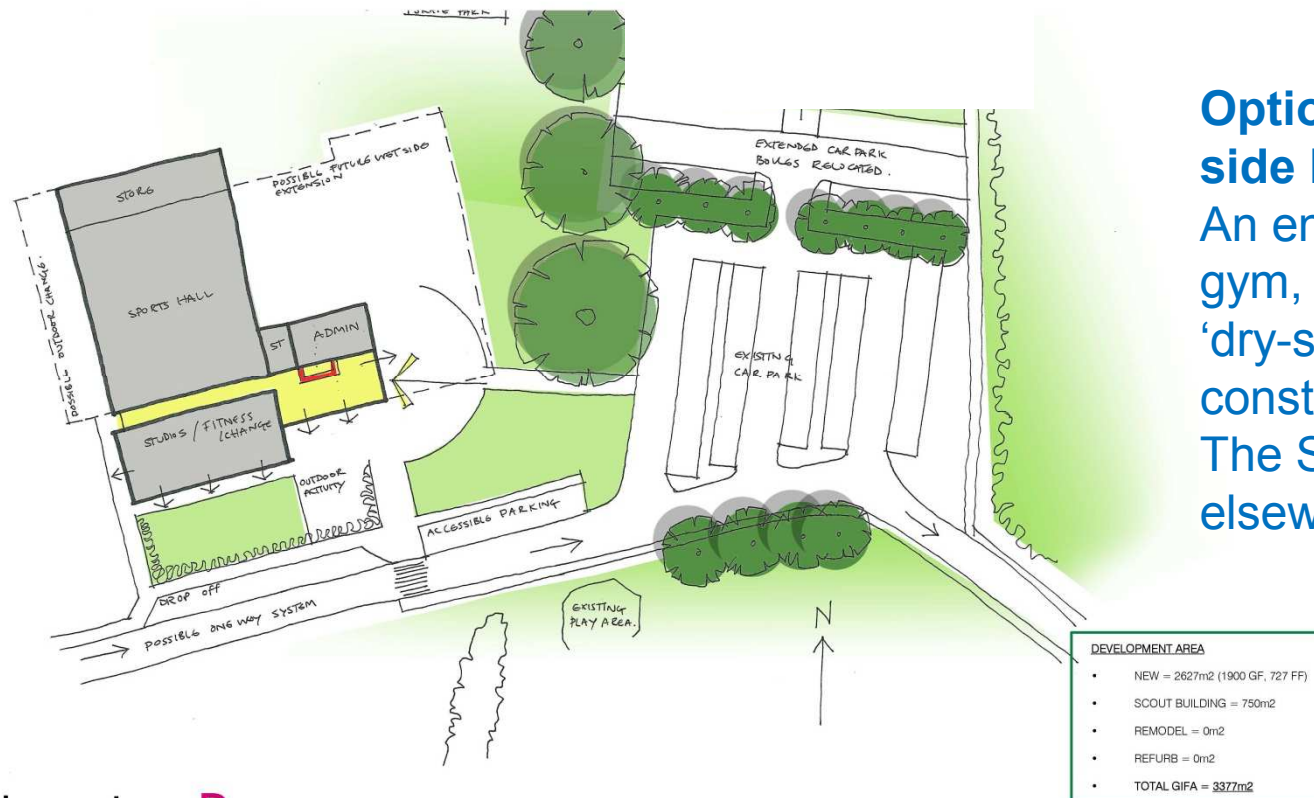
The current indoor pool is retained. A new indoor teaching pool and outdoor water play facilities replace the outdoor pool

OR

- **Option AF2 – Enhanced café and changing**

The current indoor and outdoor pools are retained. The café and changing areas are enhanced

Castle Farm – Option CF1

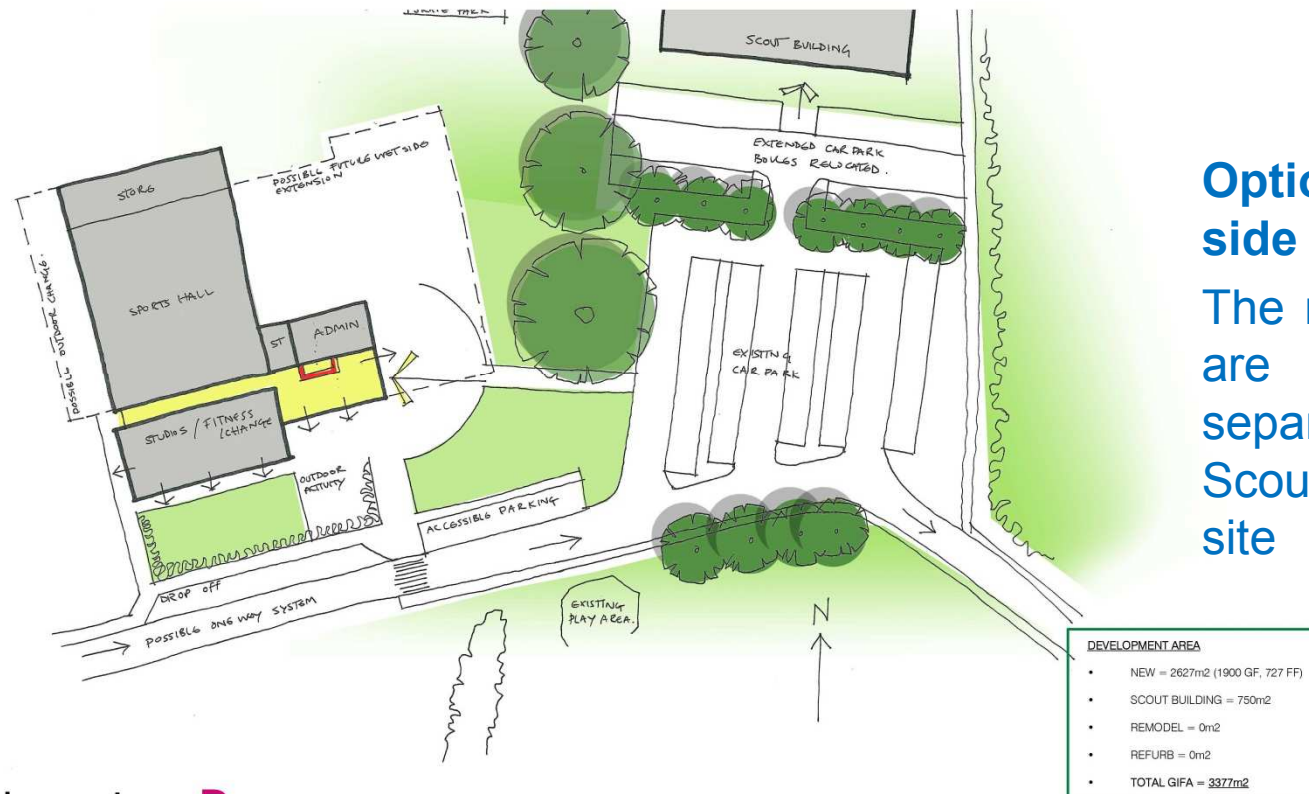


Option CF1 – New dry-side leisure centre

An entirely new sports hall, gym, studios and related 'dry-side' facilities is constructed at Castle Farm. The Scouts are re-located elsewhere

OR

Castle Farm – Option CF2

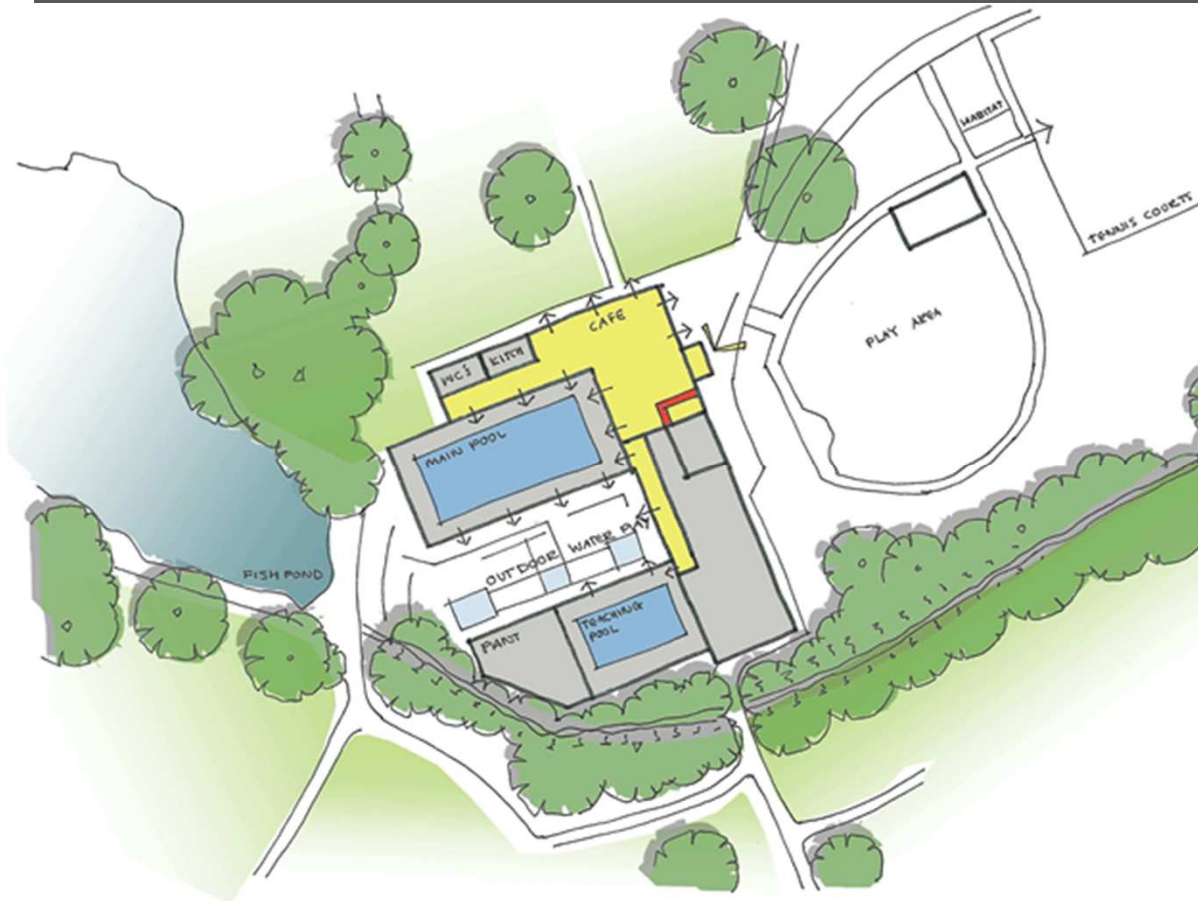


Option CF2 – New dry-side facilities with Scouts

The new 'dry-side' facilities are accompanied by a separate building for the Scouts on the Castle Farm site

AND

Abbey Fields – Option AF1

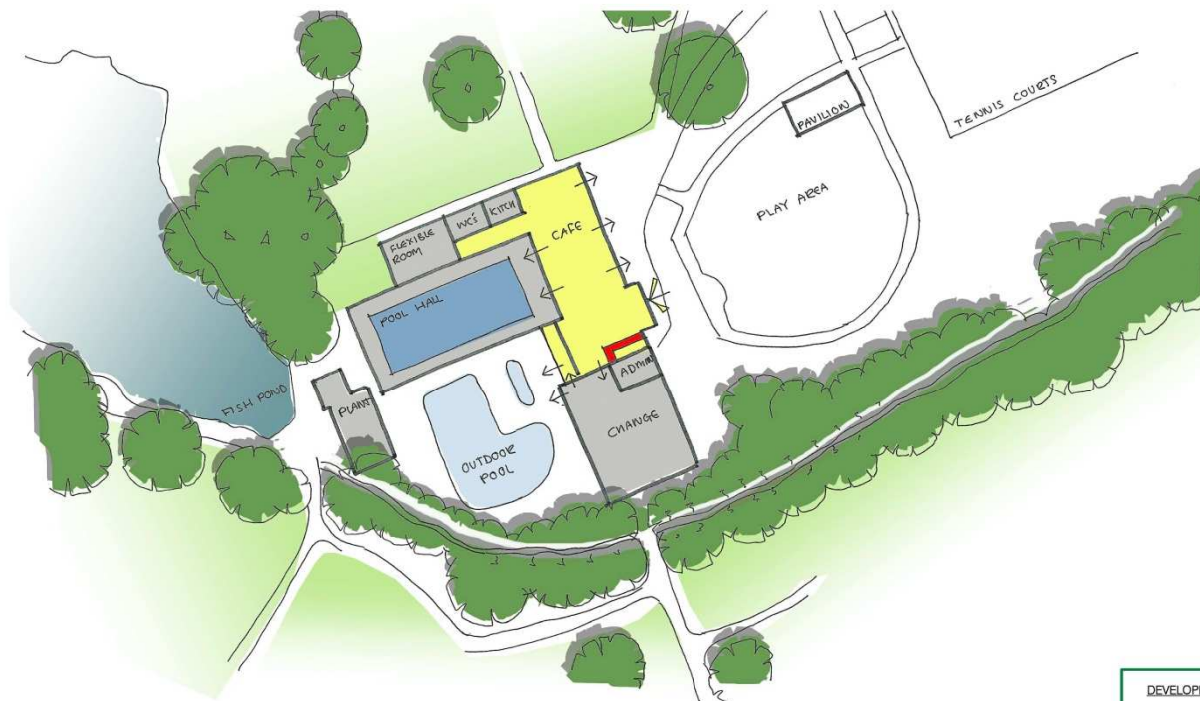


Option AF1 - Enhanced water facilities

The current indoor pool is retained. A new indoor teaching pool and outdoor water play facilities replace the outdoor pool

OR

Abbey Fields – Option AF2



Option AF2 – Enhanced café and changing

The current indoor and outdoor pools are retained. The café and changing areas are enhanced

DEVELOPMENT AREA

- NEW = 369m²
- REMODEL = 685m²
- REFURB = 436m²
- TOTAL GIFA = 1490m²



working with



on the Leisure Development Programme