

# Men's National Bowls Championships

## Sporting and Resident Impact Study

July 2012



[www.warwickdc.gov.uk](http://www.warwickdc.gov.uk)

*Neil Allen Associates Registered Office:  
20 Brook Road, Lymm, Cheshire, WA139AH*

*A limited company, registered in  
England and Wales no. 616528*



# Contents

	Page
<i>Executive Summary</i>	
1. Introduction and Context	1
2. Sporting Impact	3
3. Resident Impact	12
4. Summary and Conclusions	19

## Appendices

Appendix One: Bowls Programmes

Appendix Two: Resident Survey

# Executive Summary

- In May 2012 Warwick District Council (WDC) were approached by Bowls England to consider the potential of hosting the men's national bowls championships at Victoria Park Bowling Green's in Leamington Spa. The women's championship has been running at Leamington Spa since 1974 and Bowls England are currently assessing the feasibility of moving the men's event from its current home in Worthing to take place following the women's event at Leamington Spa.
- WDC are supportive of the proposal in-principle, however there are a number of issues, which need to be considered before any final decision is taken. In June 2012 WDC therefore commissioned Neil Allen Associates (NAA) to undertake a study into the impact of WDC hosting the men's national bowls championships. This study has focussed on two aspects; the sporting impact (on existing green users during the time of the championships) and the potential impact on local residents during an extended event period.
- The study forms part of a series of reports commissioned by the Council to consider all aspects of the event and to support their decision making process. Alongside this sporting and resident impact study WDC have also commissioned reports into the technical and maintenance issues and the economic impacts. All reports should be read in conjunction and will form the basis of any final decisions taken by the Council.
- Since 1974 Leamington Spa have played host to the women's national bowls championships. The event takes place over 16 days from the end of July through to August; in 2012 the event will run from Saturday 28th July until Sunday 12th August. If the men's event were to come to Leamington, it would start in 2014 and begin on the 2nd August 2014 and run for 30 days.
- During the current women's event (for 16 days) there is no daytime access to the greens for the bowls clubs. Royal Leamington Spa Bowls Club (LSBC) has a lease agreement with the Council, which covers the pavilion and access to 9 rinks each day. Although as part of this agreement the Council have the right to use all the greens for the staging of events as and when necessary. During the current women's event LSBC arrange to play away fixtures and generally manage to programme their activities to minimise the impact. Pottertons Bowls Club have generally completed their fixtures before the end of July and thereafter play evening games after 6pm, and have therefore felt little impact to date from the women's event. This is a similar situation for the Warwickshire Women's Bowls Association whose use of the greens also takes place before the national championships as a qualifier for the nationals. The current women's championship also has little impact on the Home Guard Bowling Club, as up until this season the club have only played matches and roll-ups after 6pm. During the 2012 season the club has booked a limited number of daytime rinks over various days of the week. These will not be available during the 16 day period of the women's championships but the club are relaxed about this, given daytime use is a new departure this season.
- Whilst the current sporting impacts appear to be managed, extending the event to 30 days clearly has the potential to impact to a greater extent on the clubs and other user groups who currently access the greens during the proposed extended period. Alongside the issues of green access the impact on the pavilion, changing and general infra-structure will also be increased.
- In terms of current resident impacts, the residents also have experience of the impacts of the women's event over the current 16 days and the Council work with residents on mitigating the impacts with various measures including resident parking schemes. Based on experience and the cooperation between the Council and residents the event currently takes place with very few complaints, aside from early morning noise from mowing and leaf blowing (particularly at weekends), from those houses immediately adjacent to the greens and some car parking concerns. At present the Council employ two greens keepers during the championships to cut the greens. Here again however it is evident that extending the event to 30 days has the potential for greater resident impact.
- The final aspect of the potential move of the men's championships to Leamington Spa, is if this were to happen it could precipitate Leamington Spa becoming the National Bowls Centre. England Bowls currently have offices as part of the bowls pavilion in Leamington, alongside the hosting of both

national championships; the next logical step could be designating Leamington Spa as the National Bowls Centre. Whilst this decision is some way off and the implications are not known in any detail, it will inevitably bring greater all year round activity to the greens and the general infra-structure. Whilst this report does not deal with the impact of Leamington Spa becoming the National Centre for bowls per se, in both the sporting and resident sections of the report we have attempted to highlight some of the issues, which may need to be considered going forward if this were to happen.

- Analysis of the programme and consultation with Bowls England and the impacted clubs shows there would appear to be significant capacity in the system to deliver the championships over 30 days and allow a good level of daytime access to LSBC and other clubs e.g. Home Guard. Clubs would therefore not be significantly inconvenienced by extending the championships to 30-days. Bowls England has committed to look at daytime access flexibly and maintain the commitment to full access after 6pm. Careful programming discussions between the clubs and Bowls England in advance of the 2014 season to ensure fixtures are properly scheduled, should mitigate most if not all the impact. Bowls England have undertaken and indeed are already developing this work.
- LSBC (the main club) are supportive of the men's championships coming to Leamington Spa and the members have voted to unanimously support the event. Green access and direct sporting impact does not appear to be a concern but the extension will put a strain on the capacity of the building and people (who are all volunteers) to cope during the extended championships and potentially longer term if the National Centre were to come to Leamington Spa. Discussion should take place to develop a joint approach between the club, WDC and Bowls England to address these issues.
- The majority of residents in Leamington Spa, surveyed as part of the impact study are supportive of both the current women's national championships (78%), and the potential of bringing the men's national championships to Leamington Spa (59%). There are very few strongly against the current championships (4%) and any future expansion (9%).
- Whilst residents are supportive there are clearly issues for the Council to consider in its future planning of an extended championships including; longer-term resident parking arrangements, parking on Victoria Park, early morning noise and activity and the future potential impact of the National Centre status.
- There is therefore a good level of support from both the bowls community and local residents for attracting the men's national bowls championships to Victoria Park in Leamington Spa. There is no reason, based on sporting and resident impact why the council should not vote to support the event. However extending the event to 30-days will have various impacts, which the council need to note and commit to work through with Bowls England, bowls clubs and local residents in the lead up to 2014.
- Key issues for the Council to consider include:
  - Ensure Bowls England commit to delivering daytime access to the greens (subject to the championship programme) in discussions with LSBC and Home Guard;
  - Work with LSBC and Bowls England to address the pavilion redevelopment issues and establish the priority elements for delivering the extended national championships;
  - Work with LSBC and Bowls England to address capacity of the club within the current volunteer set-up to deliver a 30-day event;
  - Support residents to maximise the benefits of the extended event e.g. provide advice on renting out rooms and property;
  - Review the parking arrangements for the event and consider the following initiatives:
    - Setting aside specific parking spaces for residents only, and for the exclusive use of resident permit holders, particularly on Archery Road;

- o Limit other parking spaces in the road to 2 hours (not the current 4 hours);
  - o upgrading the 'car park' at the end of Archery Road to ensure it meets the needs of LSBC;
- Seek to explore the potential to mitigate against early morning mowing and activity on the greens. This could be overcome by employing more green keepers during the event, meaning mowing could potentially start later, and or using quieter electrically powered mowers; and
- Consider alternatives to spectator parking on Victoria Park, in order not to take out the Park for the whole of August. Consideration should be given to potential park and ride initiatives in partnership with Warwickshire College or other school sites.
- Alongside consideration of the above issues as they impact on the extension of the national championships the council should also continue to monitor any moves to designate Leamington Spa as the National Bowls Centre and commit to consider the impacts on a similar basis if this should arise.

# Introduction and Context

1. In May 2012 Warwick District Council (WDC) were approached by Bowls England to consider the potential of hosting the men's national bowls championships at Victoria Park Bowling Green's in Leamington Spa. The women's championship has been running at Leamington Spa since 1974 and Bowls England are currently assessing the feasibility of moving the men's event from its current home in Worthing to take place following the women's event at Leamington Spa.
2. WDC are supportive of the proposal in-principle, however there are a number of issues, which need to be considered before any final decision is taken. In June 2012 WDC therefore commissioned Neil Allen Associates (NAA) to undertake a study into the impact of WDC hosting the men's national bowls championships. This study has focussed on two aspects; the sporting impact (on existing green users during the time of the championships) and the potential impact on local residents during an extended event period.
3. The study forms part of a series of reports commissioned by the Council to consider all aspects of the event and to support their decision making process. Alongside this *sporting* and *resident* impact study WDC have also commissioned reports into the technical and maintenance issues and the economic impacts. All reports should be read in conjunction and will form the basis of any final decisions taken by the Council.
4. Our approach to the sporting and resident impact studies are set out below:

## **Sporting impact**

- Review of the current bookings and green programme during the potential event period, to understand the pressures / opportunities on the greens before, during and after the event and the scope for reprogramming to mitigate any impacts;
- Consultation with Bowls England to understand the impacts and potential flexibilities during the national championships and understand any greater impacts of the men's championships over and above the extended time period;
- Consultation with key clubs and user groups to understand how an extended event may impact on them; the Royal Leamington Spa Bowls Club (LSBC), Pottertons Bowls Club, Home Guard Bowling Club and Warwickshire Women's Bowls Association; and
- Based on the above, detail the impacts (negative and positive), the potential mitigation strategies and overall conclusion of the impact of hosting the men's championship on the bowls clubs.

## **Resident impact**

- Identification of the resident catchment around the greens;
- Household survey sent to all homes within the catchment with letter, survey and freepost reply envelope, setting out the issues and gaining views on hosting the men's championships;
- *Drop in session* advertised in the survey correspondence and arranged to take place in the bowls pavilion to provide opportunities for residents to give further views;
- Based on the above detail the impacts (negative and positive), the potential mitigation strategies (anything over and above the current approach) and overall conclusion of the impact of hosting the men's championship on local residents.

5. The Appendices to the study report are:
  - Appendix One - copy of the current bowls green summer programme; and
  - Appendix Two - copy of the resident survey
6. This report sets out the findings of the sporting and resident impact study based on the methodology set out in the previous page.

### **Context**

7. Since 1974 Leamington Spa have played host to the women's national bowls championships. The event takes place over 16 days from the end of July through to August; in 2012 the event will run from Saturday 28<sup>th</sup> July until Sunday 12<sup>th</sup> August. As set out WDC has been approached by Bowls England to host the men's championships to run after the women's. This will mean the greens will be occupied by the event for 30 days. If the men's event were to come to Leamington, it would start in 2014 and begin on the 2nd August 2014 and run for 30 days.
8. During the current women's event (for 16 days) there is no daytime access to the greens for the bowls clubs. Royal Leamington Spa Bowls Club (LSBC) has a lease agreement with the Council, which covers the pavilion and access to 9 rinks each day. Although as part of this agreement the Council have the right to use all the greens for the staging of events as and when necessary. During the current women's event LSBC arrange to play away fixtures and generally manage to programme their activities to minimise the impact. Pottertons Bowls Club have generally completed their fixtures before the end of July and thereafter play evening games after 6pm, and have therefore felt little impact to date from the women's event. This is a similar situation for the Warwickshire Women's Bowls Association whose use of the greens also takes place before the national championships as a qualifier for the nationals. The current women's championship also has little impact on the Home Guard Bowling Club, as up until this season the club have only played matches and roll-ups after 6pm. During the 2012 season the club has booked a limited number of daytime rinks over various days of the week. These will not be available during the 16 day period of the women's championships but the club relaxed about this, given daytime use is a new departure this season.
9. Whilst the current sporting impacts appear to be managed, extending the event to 30 days clearly has the potential to impact to a greater extent on the clubs and other user groups who currently access the greens during the proposed extended period. Alongside the issues of green access the impact on the pavilion, changing and general infra-structure will also be increased. The next section explores these issues in greater detail.
10. In terms of resident impacts, the residents also have experience of the impacts of the women's event over the current 16 days and the Council work with residents on mitigating the impacts with various measures including resident parking schemes. Based on experience and the cooperation between the Council and residents the event currently takes place with very few complaints, aside from early morning noise from mowing and leaf blowing (particularly at weekends), from those houses immediately adjacent to the greens and some car parking concerns. At present the Council employ two greens keepers during the championships to cut the greens. Here again however it is evident that extending the event to 30 days has the potential for greater resident impact, this again will be explored in subsequent sections.

11. The final aspect of the potential move of the men's championships to Leamington Spa, is *if* this were to happen it could precipitate Leamington Spa becoming the National Bowls Centre. England Bowls currently have offices as part of the bowls pavilion in Leamington, alongside the hosting of both national championships, the next logical step could be designating Leamington Spa as the National Bowls Centre. Whilst this decision is some way off and the implications are not known in any detail, it will inevitably bring greater all year round activity to the greens and the general infra-structure. Whilst this report does not deal with the impact of Leamington Spa becoming the National Centre for bowls per se, in both the sporting and resident sections of the report we have attempted to highlight some of the issues, which may need to be considered going forward if this were to happen.

## Sporting Impact

12. The current arrangement for the women's nationals sees no daytime access to the greens for 16 days, but with availability after 6pm each day. As set out in the previous section, this is manageable for the impacted clubs and organisations. Consultation with Bowls England reveals if the men's event was to come to Leamington Spa they would be more *flexible* in terms of daytime access and subject to programming, would be happy to seek to provide at least one green for access by clubs on each day during the 30 day period, on top of the continued full access after 6pm. The daytime access proposed is similar to that currently enjoyed at Worthing during the men's event by local bowlers.
13. Leamington Spa Bowls Club competes in a Wednesday league, which is very popular. Ideally, they would be able to continue the Wednesday league without hindrance from the national championships (during the current women's event they currently play away fixtures). The current tournament schedule for the national championships is very quiet on a Thursday, so there may be scope to shift Wednesday's events to Thursday, so that the club can continue with the Wednesday league. The national championships then have the option of using Wednesday as a free day. However, if weather intervenes, Bowls England has the right to reserve the greens. Nonetheless, only 30 minutes of play have been lost to weather in previous tournaments so this should not be an issue, the greens at Leamington Spa also have good drainage.
14. Just looking at this one example it would appear that certainly as far as LSBC are concerned, they may actually be better placed to minimise the impact of a combined event given Bowls England stated *flexibility* for daytime access. Set out below is a more detailed analysis of the programming issues. The analysis is based on the current women's and men's championship schedules *overlayed* with the *normal* programme at the Leamington Spa greens over the same 30-day period.

### Programme Analysis

15. At present the women's national championships have 100% access to the Leamington Spa greens during the tournament. There are no rinks available to the club during this time, until after 6pm each day. In comparison, at the men's championships (currently in Worthing), the club are given one green as often as possible. The below analysis shows where, and how many, greens could be available to the clubs during the extended championships (in the current format) and what flexibility there is in the system. The analysis takes a *day by day* look at the tournament schedule and the current activity on the greens.
16. The days highlighted in green show where the LSBC would have access to the 9 rinks. The days highlighted in yellow indicate where the club would have access to the greens, but less than the 9 rinks. The red highlights where the club would have no access.



*Saturday 28th July*

17. The first day of the women's tournament only requires 12 rinks in the morning, equating to 2 greens. Therefore LSBC could have access to the remaining 3 greens. However, the tournament prefers not to use the outside rinks of each green, which in effect means they would require 3 greens (3x4 rinks), so the club would only be able to use 2 greens. In the afternoon, only 6 Rinks (1 green) are required for the tournament, though this may use 2 greens, enabling the club to access to 3/4 greens.

*Sunday 29th July*

18. In the morning, 12 rinks are required for tournament use (3 Greens), which enables the club to have access to 2 greens. However, the afternoon requires 30 rinks, meaning every green is in use and therefore none available to the club.

*Monday 30th July*

19. The morning session requires 16 rinks, which would require 4 greens using the 4 inside rinks of each green. This would give the club access to 1 green. The afternoon uses 22 rinks, which would use all 5 greens if the outside rinks were not used.

*Tuesday 31st July*

20. 28 rinks are needed for the morning, meaning no access to the rinks for the club. The afternoon requires 10 rinks, which means they would use 3 greens, enabling the club access to the other 2.

*Wednesday 1st August*

21. The tournament requires 9 rinks in the morning, totaling 3 greens, giving the club access to the other 2. The afternoon session requires 18 rinks, totaling 5 greens, giving the club access to 1 green.

*Thursday 2nd August*

22. The tournament needs 24 rinks on Thursday morning, meaning all the greens will be in use. The afternoon requires 17 rinks, meaning only 1 green would be available to the club.

*Friday 3rd August*

23. In the morning, only 11 rinks are in use, equating to 3 greens, giving the club access to the other 2. However, from 12 noon, 20 rinks are required (all greens). The afternoon also requires 20 rinks, so there would be no club access from 12.

*Saturday 4th August*

24. The Saturday morning session uses 26 rinks, so all greens are required. In the afternoon, 13 rinks are needed (4 greens), giving the club access to only 1 green.

*Sunday 5th August*

25. 6 rinks are in use in the morning session, meaning the club has access to 3 greens. In the afternoon, the tournament needs 17 rinks, meaning all 5 greens will be in use and there will be no access for the club.

*Monday 6th August*

26. The morning session on Monday requires all the greens, as 24 rinks are required. The afternoon session requires 16 rinks, so 4 greens will be in use. The club will have access to 1 green.

#### *Tuesday 7th August*

27. The tournament uses 16 rinks on Tuesday morning, a total of 4 greens, so the club will have access to 1. In the afternoon, only 8 rinks are required (2 greens), giving the club the other 3.

#### *Wednesday 8th August*

28. In the morning, 18 rinks are in use, so all 5 greens are tied up. Furthermore, there are 13 greens in use mid-morning. The afternoon also requires 18 rinks, so there are no greens available to the club all day. There are also 8 rinks required in the evening, so only 3 rinks will be available for the club.

#### *Thursday 9th August*

29. Only 4 rinks are required on Thursday morning (1 green), and again only 2 rinks are required mid-morning. Therefore, the club would have access to 4 greens. In the afternoon, the tournament still only requires 11 rinks, so the club would still have access to 2 greens. This is the quietest day of the tournament with regards to rinks/greens in use.

#### *Friday 10th August*

30. There would be no access for the club on Friday morning, as 28 rinks are required for tournament use. However, there are only 16 rinks in use by mid-morning, giving the club access to 1 green. The afternoon only requires 8 rinks, so the club would have access to 3 greens.

#### *Start of Men's Tournament*

#### *Saturday 11th August*

31. As it stands, this is where the women's and men's tournaments clash. The current schedule does not take into account the fact that there are only 30 rinks available between the men and women as they are not held at the same place. Nonetheless, the women's tournament requires access to 20 rinks in the morning (5 greens), 26 rinks mid morning (5 greens) and 13 rinks in the afternoon (4 greens). The men's tournament requires 24 rinks in the morning (5 greens), 28 rinks mid morning (5 greens) and 16 rinks in the afternoon (4 greens). This could be a pinch point generally, which Bowls England would need to work through.

#### *Sunday 12th August*

32. Sunday is the final day of the women's tournament. The women's tournament requires 10 rinks in the morning (3 greens), 2 rinks mid morning (1 green), and 4 rinks in the afternoon (1 green). The men's tournament requires 12 rinks in the morning (3 greens), 6 rinks mid morning (2 greens) and 3 rinks in the afternoon (1 green). Therefore, the club would have access to 3 greens in the afternoon regardless of both tournaments taking place at the same time.

#### *End of Women's Tournament*

#### *Monday 13th August*

33. The men's tournament requires all 30 rinks for the morning session. Therefore the club would have no access to the greens. In the afternoon, they require 16 rinks (4 greens), so the club would have access to the other green.

#### *Tuesday 14th August*

34. The morning session only requires 8 rinks, so there will be 3 greens available to the club. However, the afternoon session requires a total of 20 rinks, so all greens will be in use then.

#### *Wednesday 15th August*

35. Wednesday 15th is when the club has their own fixtures scheduled. Therefore, these will also need to be scheduled around the tournament. The championships require 10 rinks in the

morning (3 greens) and 15 rinks in the afternoon (4 greens). The club has an afternoon fixture requiring 12 rinks. This would be possible, though they would have to use the outside rinks on the 2 greens.

**Thursday 16th August**

36. The men's tournament requires all 30 rinks in the morning and 24 rinks in the afternoon. The club has a fixture scheduled in the afternoon that would need 4 rinks. The only way this would be possible is if the championships agreed to use the outside rinks of all of the greens.

**Friday 17th August**

37. The morning session requires 28 rinks, followed by 2 further rinks mid morning. In the afternoon, the tournament requires 13 rinks (4 greens). The club has a fixture scheduled for 12 rinks, which would only be able to go ahead in the afternoon if the tournament agreed to use the outside lanes of one of the greens..

**Saturday 18th August**

38. The club has no fixtures scheduled for Saturday. The tournament requires 6 rinks in the morning, followed by 8 mid morning (both 2 greens). In the afternoon, only 7 are required, so the club will have access to at least 3 greens all day.

***Note: Visually Impaired Bowls England (VIBE) National Championships Start but they are not always played at Leamington Spa though (see later).***

**Sunday 19th August**

39. The morning session requires 6 rinks (2 greens) and the afternoon session requires 16 rinks (4 greens). The VIBE National Championships require 12 rinks, which would be possible if they used the outside rinks on the 2 greens available.

**Monday 20th August**

40. The men's championships require all 30 rinks in the morning, and 16 rinks (4 greens) in the afternoon. The club requires 18 rinks (VIBE National Championships 12, Club fixture 6). The club fixture could go ahead on the available green. However, the VIBE championships would have to be rescheduled. As they don't finish until Friday, the likelihood is that the whole VIBE championship would have to be moved, as there is not enough space to reschedule a whole day's play.

**Tuesday 21st August**

41. The morning session requires 16 rinks (4 greens), whereas the afternoon session requires just 8 rinks (2 greens). The club has 15 rinks scheduled (3 in the morning, 12 in the afternoon). These would all be able to go ahead as planned.

**Wednesday 22nd August**

42. There are only 4 rinks scheduled to be used in the morning session. However, the afternoon requires 22 rinks, so all of the greens would be in use. The club has 24 rinks scheduled (12 morning/12 afternoon). If the afternoon fixtures were moved to the morning, then they could all go ahead. The men's championships also require 6 rinks in the evening.

**Thursday 23rd August**

43. The championships require 28 rinks in the morning, followed by a further 16 mid morning. In the afternoon, only 8 rinks are in use. The club again has 24 rinks scheduled for play (12 morning/12 afternoon). The afternoon fixtures could go ahead as planned. However, the VIBE championships would again need to be rescheduled.

#### *Friday 24th August*

44. There are 12 rinks scheduled for play in the morning, followed by 2 more mid morning. The afternoon session requires just 5 rinks. There are 18 rinks planned for use by the club on Friday morning, which could go ahead if the men's championships agree to use the outside rinks of the greens. Alternatively, some of the fixtures could move to the afternoon, where there are 3 free greens.

#### *Saturday 25th August*

45. The club has no fixtures scheduled Saturday. In the morning, the championships have 28 rinks, and 22 mid morning, both requiring all 5 greens. The afternoon has 23 rinks, and a further 8 in the evening. Therefore the club has no access during the day and only 3 rinks in the evening.

#### *Sunday 26th August*

46. The final day of the championships requires 12 rinks in the morning, with another 6 rinks mid morning. The afternoon session only requires 3 rinks. The club has 12 rinks scheduled for play in the morning which would be no issue assuming they are happy to use the outside rinks of their greens.

#### *Summary*

47. To summarise the analysis, the women's championship allows LSBC theoretical access to 9 rinks on 9 of the 16 days, and access to a single green on 4 of the other 7 days. There are only 3 days where the club wouldn't be able to access the greens (excluding evenings). The men's championship provides access of at least 9 rinks on 10 of the 16 days, with access to a green on 3 of the other 6 days. There would only be no access during the day on 3 days.
48. Of the total 30 days combined event based on the current schedules, there would be access to a minimum of 9 rinks on 18 days, and access to at least one green on 7 days. This means there would only be no access on 5 of the 30 day championships. This is without any re-scheduling to take account of club needs.
49. The above analysis is only indicative and clearly there would need to be careful programming discussions between the clubs and Bowls England in advance of the 2014 season to ensure fixtures could be properly scheduled. Bowls England have undertaken and indeed are already developing this work. At this point however what the analysis shows is there would appear to be significant capacity in the system to deliver the championships over 30 days and allow significant daytime access to LSBC and other clubs e.g. Home Guard.
50. Furthermore over the long-term there could be potential to reduce the length of the combined event to 23/24 days by integrating the men's and women's events more fully – similar to the setup of the Wimbledon Tennis Championships.
51. If Leamington Spa were eventually designated the National Centre this would increase activity throughout the year at the greens for things such as; international trials, training days, international championships etc. In terms of impact on the greens the maximum requirement for any single event would be for 2 greens, leaving with careful programming, significant capacity to meet the needs of LSBC and other clubs and organisations. The greens are rarely if ever fully utilised throughout the season, analysis shows there is significant spare capacity, even for the LSBC 9 rink allocation.

52. Brining the National Centre to Leamington would also bring other benefits in terms of business and kudos to the area, however an increased events profile, whilst it could be absorbed in terms of rink availability, could put pressure on the bowls and surrounding infrastructure. This is discussed later.
53. Given Bowls England's preparedness to be *flexible* the direct sporting impact of extending the championships, in terms of access to rinks for LSBC and other clubs and organisation would appear to be negligible. Indeed given the willingness to allow day time access, in terms of rink availability, the likely future situation represents a better position than that currently enjoyed.
54. Clearly the above reflects the *theoretical* position and clubs views may differ. Furthermore it is evident that there is wider sporting impacts than just the issue of direct green access. Set out below is an analysis of the responses of clubs to the issues of green access and wider considerations. The clubs consulted reflect those main users during the proposed period of the extended championships.

#### **Royal Leamington Spa Bowls Club**

55. The Royal Leamington Spa Bowls Club (LSBC) has a lease with the Council for the operation of the pavilion and weekly access to 9 rinks throughout the season, although as previously pointed out the Council have the right to use all greens for the staging of events as and when necessary. In terms of the clubs, the current women's championships has the greatest impact on LSBC in terms of both access to the greens but also the event itself as LSBC play a major role in the successful staging of the event, managing the pavilion to provide food and drinks for competitors and spectators over the 16 day period. This is all undertaken by volunteers and whilst the club enjoy the current role it places an increasing strain on the capacity of volunteers and the infra-structure of the pavilion.
56. With the potential to extend the championships to 30 days this will obviously place increasing strain on LSBC. The club see the impacts in four main areas:
- Playing access and green availability;
  - Pavilion (bars, kitchen, changing, toilets) infra-structure;
  - Volunteer capacity; and
  - Car parking

LSBC also have broader concerns in terms of the potential impact were Leamington to be designated as the National Centre. The above issues are addressed in the following paragraphs.

57. Before setting out the issues it is important to note that the LSBC members have already voted in unanimous support of the men's championships coming to Leamington Spa. The issues set out therefore reflect areas for potential development between LSBC, Bowls England and WDC in the detailed planning of the combined championships.
58. In terms of green access LSBC currently do not play on the greens during the 16 days of the women's championships. As previously set out for a two-week period this is manageable. If the event were to extend to 30-days the club would ideally like daytime access to one green for 14 out of the 30 days. The analysis set out earlier would appear to indicate that this should be achievable and indeed discussions are already underway between LSBC and

Bowls England to facilitate this arrangement. Agreement would need to be reached by February 2014 to inform the League, but all indications would appear to suggest that this arrangement can be easily accommodated. In terms of playing access and green availability therefore extending the championships would not appear to have a negative impact on LSBC, indeed it would actually improve upon the current arrangements, where there is no daytime access.

59. The pavilion was opened in 1995 and little has changed over the 17-years other than cosmetic upgrades funded by the club. The pavilion can just about cope with the hosting of the women's championships but the club feel the extra numbers over the longer time period would place an undue strain on the pavilion and fear it would struggle to accommodate the potential extra pressures. Whilst Bowls England would bring a greater level of infra-structure to support a combined event and potential exists for WDC to make more use of the on-site café it is evident that the pavilion would benefit from upgrade and extension to support the event and the potential wider demands made on the facilities if it were designated the National Centre. Areas of potential development, which require discussion between the club, Bowls England and WDC include:

- Kitchen extension;
- Extended bar area and storage; and
- New toilet accommodation

Alongside longer term needs there are also likely to be increased pressures during the championships on changing and locker access, which are likely to prove more challenging in the future given LSBC members will be using the greens and accessing the changing rooms alongside championship competitors.

60. LSBC have a number of committees looking at various aspects of pavilion re-development. It is suggested that these groups are now extended to include both the Council and Bowls England who should explore jointly the pavilion redevelopment priorities and needs, to meet the likely long-term demands of extending the men's championships and any potential National Centre designation.
61. Alongside the capacity of the building to cope with the potential increased pressures of extending the championships to 30 days, it will also place a significant increased burden on the volunteers of LSBC. Resourcing the extended championships and a potentially increased number of high profile events, which may emerge through National Centre status, will present a significant challenge to LSBC. The club acknowledge that the championships do provide a financial boost to the club and are keen to remain fully involved in any future arrangements but it may be unsustainable to operate over 30-days under the same *volunteer model*. Alternative strategies may need to be considered and here again discussions with the club, WDC and Bowls England should take place to determine an optimum future management model which supports LSBC and benefits all parties.
62. As throughout the study, parking is also an issue for LSBC. During the current national championships LSBC members who are working at the championships receive car parking passes. This generally works well and the passes are sufficient, to meet the needs of members. Members use the bowls car park at the end of Archery Road however in the evenings; members often park in the road itself as the bowls car park is dark and can be intimidating. This can be an issue with residents (see later). In future car parking requirements are likely to be increased as LSBC will need passes for workers, players and away teams. The Archery Road car-park should be able to cope with likely numbers but the logistics, particularly in terms of away teams will need careful consideration. Also the



potential for increased members to use the roads in the evenings may cause further disruption to residents. In short, parking for LSBC members will need to be reviewed as part of any extension to the championships.

63. Alongside consideration of parking during the championships it may also be necessary in future to monitor the impact of wider National Centre events (should this occur). Whilst the rink numbers and volumes of users are not predicted to be significant by Bowls England, without a resident permit scheme or *members pass policy* in operation, at certain times parking could prove a challenge. Clearly this is a long way off but if the National Centre was to come to Leamington Spa car parking arrangement would need to be reviewed on an event by event basis.
64. In short LSBC are supportive of the men's championships coming to Leamington Spa. Green access and *direct sporting impact* does not appear to be a concern but the extension will put a strain on the capacity of the building and people to cope during the extended championships and potentially longer term if the National Centre were to come to Leamington Spa. Discussion should take place to develop a joint approach between the club, WDC and Bowls England for addressing these issues. Parking logistics will also need to be considered as part of any dialogue.

#### **Pottertons Bowls Club**

65. Pottertons currently play all their home games at the beginning of the season so they do not clash with the women's championships. Their last home game in 2012 is Saturday 21st July, and it is usually around the same date each year. The club do not envisage the need to change this in the future so extending the event to cover the whole of August will have no impact.
66. Pottertons do however book greens for some evening practice sessions or inter club competitions, but here again greens will be fully available after 6pm during the whole of the event. Based on this year's programme Potterton have one *roll-up* on the 21st August 2012, which is booked for 6pm when the greens will be fully available.
67. On this basis, the extension to 30 days of the men's championship will have little or no impact on Pottertons. The club agree that extending the championship season at Leamington to 30 days to include a men's championship will have little or no effect on the club.

#### **Warwickshire Women's Bowling Association (WCBA)**

68. WCBA have historically always used the Leamington Spa greens to stage their competitions. Members of the WCBA are made up of more than 50 clubs in Warwickshire and all entrants travel to Leamington to compete for entry to the national championships. All competitions are completed by the end of July in readiness for the women's nationals.
69. The WCBA have therefore finished with the greens by August and so are not impacted, by the extension of the championships

#### **Home Guard Bowling Club**

70. Home Guard Bowling Club have previously only played evening matches after 6pm and have therefore not been previously impacted by the women's championships. For the 2012 season they have however negotiated daytime access with the Council from 2pm on Monday, Wednesday, Friday and Sunday. Although the Sunday slot is rarely used.

Wednesday is the biggest rink demand when they require 6 rinks for Courier League matches. On the other days the requirement is just for 2-3 rinks.

71. Given the capacity set out earlier and the flexibility of Bowls England to accommodate daytime usage Home Guard are *relaxed* about any negative impact. This season is the first time they have had a daytime programme and club competitions are nearly finished by August. Providing they could be part of the on-going discussions between Bowls England and LSBC and some daytime access could be found Home Guard do not envisage any negative impact on their activities by extending the men's championships.

### **Civil Service and Visually Impaired Bowls England (VIBE)**

72. The Civil Service National Championships have a long tradition of holding their national championships at Leamington Spa. The event traditionally takes place at the end of August, starting on 26<sup>th</sup> August 2012. If the men's championships were to be extended this would have to be pushed back and discussions would need to take place with the Civil Service. In terms of green availability this should be deliverable as September is traditionally less busy. The only clash on the current programme would be with the Leamington Ladies Open but this is likely to fold and would therefore be unlikely to be operating in 2014. There may however be an issue of needing to rest the greens between the 30-days of the nationals and another significant event.
73. VIBE are also booked to use Leamington Spa in 2012 for their national championships from the 19<sup>th</sup> – 24<sup>th</sup> August. This is not a regular booking and VIBE more often than not use Worthing. It may be difficult to accommodate the VIBE national championships in future at Leamington Spa, over the same time period, if the men's national championships were to come.

### **Summary of Sporting Impact**

74. Analysis of the programme and consultation with Bowls England and the impacted clubs shows there would appear to be significant capacity in the system to deliver the championships over 30 days and allow a good level of daytime access to LSBC and other clubs e.g. Home Guard. Clubs would therefore not be significantly inconvenienced by extending the championships to 30-days. Bowls England has committed to look at daytime access flexibly and maintain the commitment to full access after 6pm. Careful programming discussions between the clubs and Bowls England in advance of the 2014 season to ensure fixtures are properly scheduled, should mitigate most if not all the impact. Bowls England have undertaken and indeed are already developing this work.
75. LSBC (the main club) are supportive of the men's championships coming to Leamington Spa and the members have voted to unanimously support the event. As set out above, green access and *direct sporting impact* does not appear to be a concern but the extension will put a strain on the capacity of the building and people to cope during the extended championships and potentially longer term if the National Centre were to come to Leamington Spa. Discussion should take place to develop a joint approach between the club, WDC and Bowls England for addressing these issues. Parking logistics will also need to be considered as part of any dialogue.



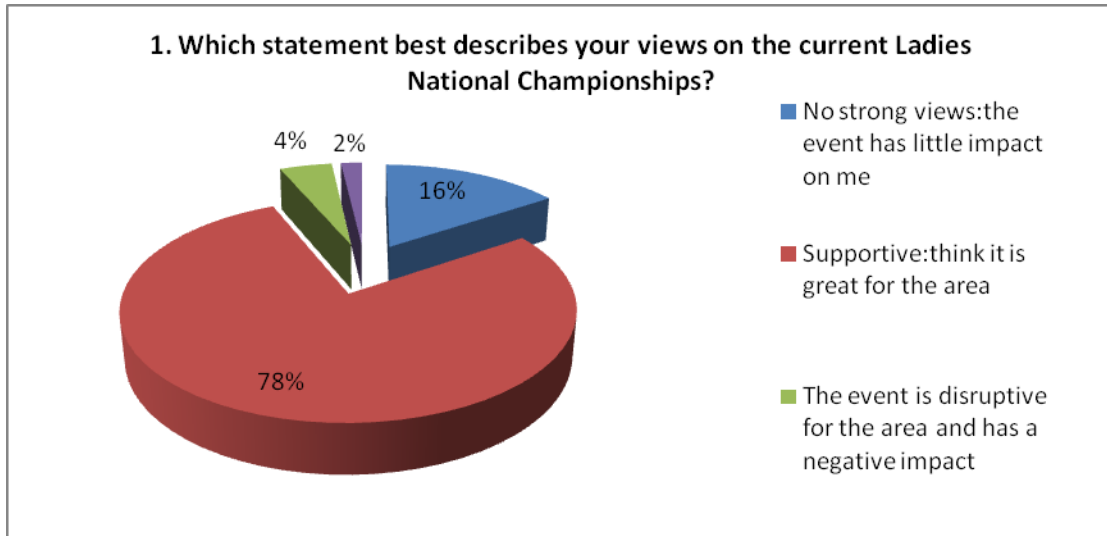
## Resident Impact

76. The household survey was posted to 637 households. The *impact area* was selected by the Council and covered the area to the south of Victoria Park bounded by the railway line and including Park Drive, Ingle Court, Avenue Road, Victoria Road, Victoria Street, Archery Road, and Station Approach. The area extended East as far as Lower Avenue at which point the boundary to the area turned North to intersect the River Leam above Manor Court before heading back west to encompass Manor House, Manor Court, York Road, and Adelaide Road. Finally the area extended to the North and then West to include Dale Street, Portland Place West, Milverton Hill, Grove Street, and Somers Place, before dropping back down to the River heading west until it intersects with the Railway line which formed the Southern boundary.

### Survey Analysis

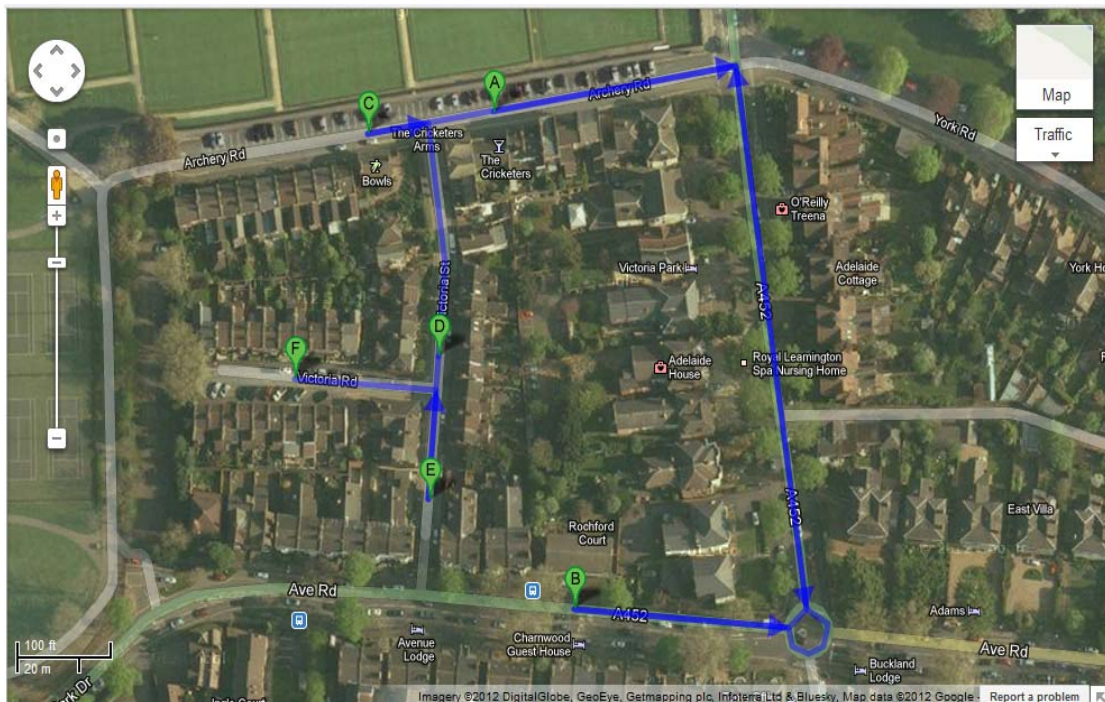
77. The overall feedback from the survey was largely positive, with a total of 111 responses received. The survey ran from 2nd July until the 16th July 2012. Of the total 637 responses sent out, the 111 returns represents a response rate of just over 17%. For postal surveys a response rate of 20% is considered to be good.
78. 78% of respondents were supportive of the current women's national bowls championships, which currently take place in Leamington Spa. The main reasoning behind the support of the event was the positive business that the bowls brings to the area (e.g. increase in trade for local hotels, pubs etc.). 16% said that the event had *little impact on them*, while 2% did not answer the question. Only 5% stated that the event has a negative impact on the area.
79. The main issue behind the negative responses was issues with car parking, particularly on Victoria Park. Several answers detailed the safety of people using the park, especially children as the event takes place during the school holidays. One response, returned from Archery Road (directly opposite the Bowls club), also stated that the noise caused in the mornings by the lawn mowers and early announcements was unacceptable for the time of day, primarily at weekends.

Q1. Which statement best describes your views on the current Women's National Championships?	Total	%
No strong views: the event has little impact on me	17	16%
Supportive: think it is great for the area	87	78%
The event is disruptive for the area and has a negative impact	5	5%
* No Answer *	2	2%
<b>Grand Total</b>	<b>111</b>	<b>100%</b>
<b>Detailed negative answer</b>		
Cars park on park? Children can't play safely The bowlers can be very noisy, klaxons have gone off at 8.30am at a weekend and the lawn mowers wake me up at an ungodly hour of the morning. Also the announcements at 8.30 are loud and wake me up at the weekends when I'm trying to sleep in This event is disruptive for those who use the park on a regular basis for dog walking or playing games with the children as it becomes a car park for 2 weeks of the school holidays This is a park. Victoria Park should not mix cars with children. Bowlers should use car parks		



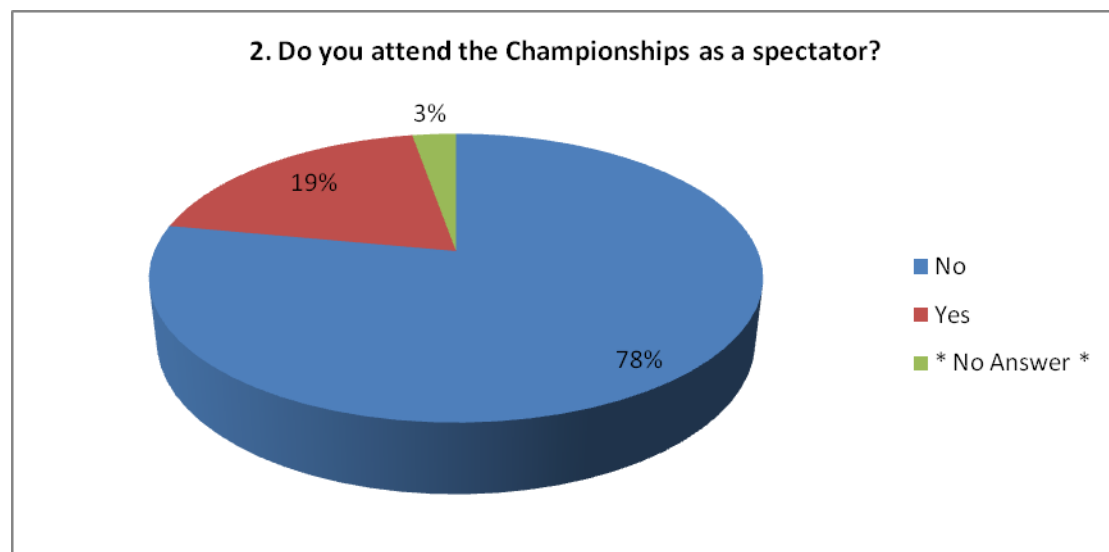
80. The map below highlights the main areas that the five negative responses were received from. As could be expected, they are close to the Bowls Club, so are more likely to be impacted by parking. They are also close to Victoria Park, so are perhaps more likely to use it.

- A - Royal Leamington Spa Bowls Club
- B - CV31 3PF
- C - CV31 3PT
- D - CV31 3PU
- E - CV31 3PY
- F - CV31 3PX



81. Only 19% of the respondents actually attend the current national bowls championships, so there is no strong bias in the results. This suggests that the majority of residents are actually happy to have the championships and the business it brings with it, and are not motivated by the bowls per se.

Q2. Do you attend the Championships as a spectator?	Total	Percentage
No	87	78%
Yes	21	19%
* No Answer *	3	3%
<b>Grand Total</b>	<b>111</b>	<b>100%</b>



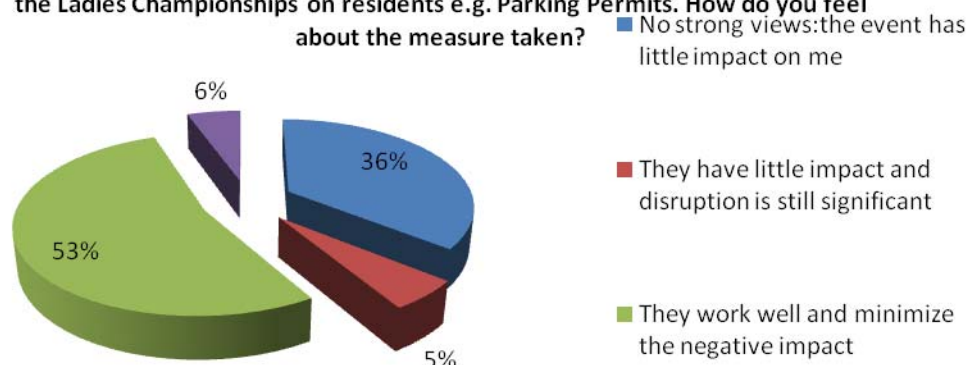
82. The responses regarding the strategies employed by the local council to reduce the impact of the championships were mixed. 53% stated that they work well and minimize the impact, whereas 36% claimed they have no strong views as the event has no strong impact on them. Only 6% said that the council policies (parking permits etc) have little impact and that the event is still disruptive. The reasons cited for this were again all in relation to parking. However, on this occasion the main issue was parking on the roads, as opposed to Victoria Park. Repetitive comments regard the amount of time people are allowed to park for free (4 hours), and parking in residents parking areas.

Q4. The Council currently employs various strategies to reduce the impact of the Ladies Championships on residents e.g. Parking Permits. How do you feel about the measure taken?		
	Total	Percentage
No strong views the event has little impact on me	40	36%
They have little impact and disruption is still significant	6	6%
They work well and minimize the negative impact	59	53%
* No Answer *	6	6%
<b>Grand Total</b>	<b>111</b>	<b>100%</b>
<b>Detailed Negative Answers</b>		
Barriers for parking are not manned long enough. Exacerbated by 4hrs free parking		
Bowlers should use car parks or Park and Ride if bowlers are unable to walk from W.D.C. parking sites. Residents parking should be for residents not bowlers. Victoria Park is for playing in-not parking or caravans		

Do not want full stop

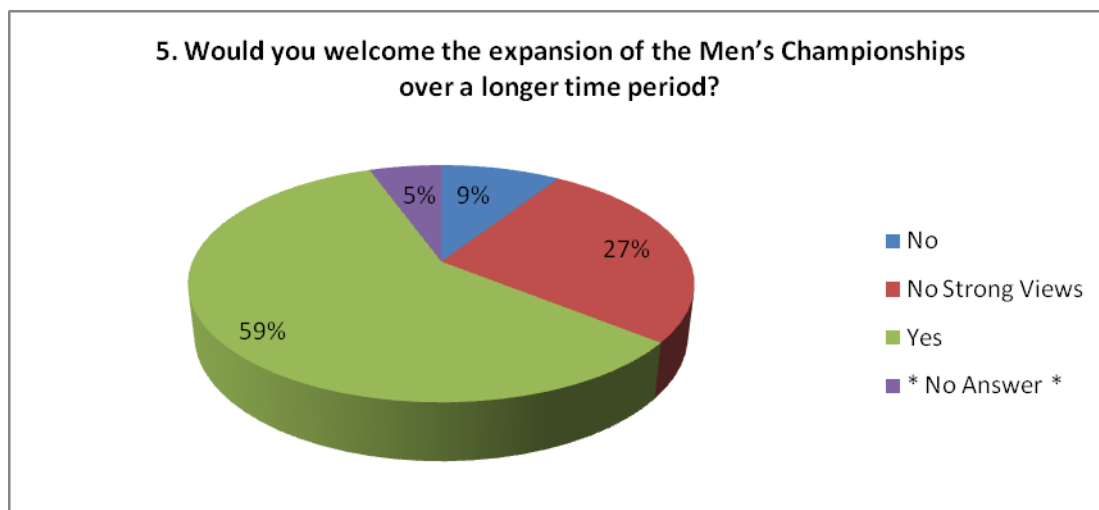
Many people still park without parking - in fact we have a garage space and they insist in parking blocking our garage access  
Need to make south-side of the road resident parking only, with a time limit on the north side  
Victoria park is effectively out of action for local residents. Better provision for parking needs to be required

**4. The Council currently employs various strategies to reduce the impact of the Ladies Championships on residents e.g. Parking Permits. How do you feel about the measure taken?**



83. Asked whether Leamington Spa residents would welcome the expansion of the men's championships over a longer period of time, the results were again mainly positive. 59% would welcome them, with only 9% against it. Again parking crops up, with some responses saying 30 days would cause too much disruption, whilst others claim that 30 days parking on Victoria Park would cause danger to children, and also require another 30 days for the park to recover (especially if weather becomes an issue). Reasons given for supporting the men's championships included; a boost to the local economy, putting Leamington on the map, the requirements for the council to maintain the surrounding area, and it encourages tourism. 27% of respondents had no strong views.

Q5. Would you welcome the expansion of the Men's Championships over a longer time period?		
	Total	Percentage
No	10	9%
No Strong Views	30	27%
Yes	65	59%
* No Answer *	6	6%
<b>Grand Total</b>	<b>111</b>	<b>100%</b>
<b>Detailed Negative Answers</b>		
30 days would be just too much A whole month of cars parking in Victoria Park, putting children, dogs, adults at risk is too much of an intrusion Charging or reducing to 2hrs free parking needs to be introduced It does affect us when we have visitors during the time the championships are on Parking is my concern To lose a whole month of the park during school holidays would be abhorrent for all of the locals. It would provoke a huge amount of ill feeling towards the council and I imagine that petitions will already be underway. Too much disruption in Victoria Park		



84. When asked what they would like to see during the national championships, many residents stated that an extension of the current parking permit scheme is imperative. Again, parking in Victoria Park is a regular occurrence, which residents would want to see addressed and potential alternatives sought. People would also like to see more Wardens surveying the area to ensure residents are not inconvenienced with parking issues, less permits handed out to *officials* and also the enforcement of a speed limit. Positive responses include linking the event with other local events to have a *wider celebration*.
85. Suggestions were made for alternative car parks, including St. Peters and Warwickshire College, as this will be empty during the summer. The vast majority of residents do not get involved in the championships. However, a number of them have requested that more information is given to them by the council about getting hold of tickets, and how to get involved with letting out rooms/houses during the championships.

### **Summary**

86. To summarise the questionnaire survey, the key points to note are that the majority of residents in Leamington Spa, surveyed as part of the impact study are supportive of both the current women's national championships (78%), and the potential of bringing the men's national championships to Leamington Spa (59%). There are very few strongly against the championships currently (4%) and any future expansion (9%), and those who are cite parking as the main issue. Parking on Victoria Park and surrounding roads is something that may need to be addressed. As previously mentioned, there may be a possibility to use school and college car parks as the event takes place during the holidays.

### **Drop-in Session**

87. As part of the resident impact study a *drop-in-session* was held in the bowls pavilion on 10<sup>th</sup> July from 12pm – 7pm. Attendance at the event was poor, perhaps reflecting the general satisfaction from residents? However a delegation of four residents from Archery Road did attend at 6.20pm in the evening. The Archery Road residents were both supportive of the current women's championships and the potential to extend the event to 30-days however they raised a number of issues which they felt would need to be taken into account by the council if the championships were to be extended.



88. The points raised by residents are set out below. We have replicated the comments in full, as the points reflect many of the themes and issues set out throughout the study and provide a good synopsis of residents issues:

- *'At present the mitigation appears to work well (although I have only lived through 1 year of the Championships). It is critical that there is no temptation to use Archery Road for more than just residents of the area. I would not want to see any access into the car parking in the park from Archery Road;*
- *I would like to see some reasonable time limits on the use of noisy machinery, especially at weekends. I also feel that there should be an overall consideration of the parking regime along Archery Road in order to provide long term benefits to the local residents. A permanent resident's only parking scheme would help to compensate local residents;*
- *I would be happy to see the expansion of the men's championship as long as there is overall consideration given to the parking situation along Archery Road as there area is very busy and generally very noisy throughout the day. Therefore, some compensation for residents on parking could be considered. There also appears to be a temptation to start the lawn mowers and other equipment earlier each day during the Championships and I would like to understand the time constraints imposed on the use of noisy equipment;*
- *At present the use of the bowling greens, together with the tennis courts in the park, pose major parking problems in Archery Road because visitors to those facilities often use spaces in the road rather than parking in the separate 'car park' at the end of the road. There are lots of minor (non-injury) parking related accidents as a result and each resident has probably had their car scratched or driven into over the course of a year;*
- *I would therefore fully support and welcome a Resident only CPZ along all or part of Archery Road together with an upgrade of the current car park, although alternative access arrangements to this car park could be considered due to the high number of pedestrians and cyclists using Archery Road to access the park, in order to reduce the vehicular, cyclist and pedestrian conflicts. When all is said and done it is the residents who have to pay to park in Archery Road and there is no element of priority given to them;*
- *It has also come to my attention that there is a potential move to attract Bowls England to Leamington Spa. Whilst this too should be seen as a positive if it brings jobs etc this will need to be properly planned for and in no way should my comments about the men's championship be taken as appropriate for this;*
- *This questionnaire is confined to the National Championships and ignores our major concerns:*
  - *Current use of the Victoria Park Bowling Green's creates major parking problems in Archery Road because bowlers often occupy spaces in the road rather than parking in the separate 'car park' at the end of the road*
  - *This situation may be exacerbated by the likely move of Bowls England to Leamington Spa. The WDC report on Joint Working with Bowls England of 18.04.12 (para. 3.2) refers to other events that would be held at Victoria Park Bowling Greens*

- *The best solutions to this would be to:*
  - *Set aside specific parking spaces as residents only and for the exclusive use of resident permit holders*
  - *Limit other parking spaces in the road to 2 hours (not the current 4 hours)*
  - *Upgrade the 'car park' at the end of the road so that it is tarmaced and has appropriate security lighting etc, we understand that it should be capable of holding at least 70 cars*
- *It's crucial that these broader issues are considered in detail by the council. We understand that the LSBC, who are conscientious in trying to maintain good relations with Archery Road residents, would be sympathetic to at least some of these proposals.'*

89. So whilst the comments set out above are from supportive residents there are clearly issues for the council to consider in its future planning of an extended championships including; longer-term resident parking arrangements, parking on Victoria Park, early morning noise and activity and the future potential impact of the National Centre status.

#### **Summary of Resident Impact**

90. The majority of residents in Leamington Spa, surveyed as part of the impact study are supportive of both the current women's national championships (78%), and the potential of bringing the men's national championships to Leamington Spa (59%). There are very few strongly against the current championships (4%) and any future expansion (9%).
91. Whilst residents are supportive there are clearly issues for the council to consider in its future planning of an extended championships including; longer-term resident parking arrangements, parking on Victoria Park, early morning noise and activity and the future potential impact of the National Centre status.

## Summary and Conclusions

92. There is a good level of support from both the bowls community and local residents for attracting the men's national bowls championships to Victoria Park in Leamington Spa. There is no reason, based on sporting and resident impact why the council should not vote to support the event. However extending the event to 30-days will have various impacts, which the council need to note and commit to work through with Bowls England, bowls clubs and local residents in the lead up to 2014.
93. Key issues for the council to consider include:
- Ensure Bowls England commit to delivering daytime access to the greens (subject to the championship programme) in discussions with LSBC and Home Guard;
  - Work with LSBC and Bowls England to address the pavilion redevelopment issues and establish the priority elements for delivering the extended national championships;
  - Work with LSBC and Bowls England to address capacity of the club within the current volunteer set-up to deliver a 30-day event;
  - Support residents to maximise the benefits of the extended event e.g. provide advice on renting out rooms and property;
  - Review the parking arrangements for the event and consider the following initiatives:
    - Setting aside specific parking spaces for residents only, and for the exclusive use of resident permit holders, particularly on Archery Road;
    - Limit other parking spaces in the road to 2 hours (not the current 4 hours);
    - upgrading the 'car park' at the end of Archery Road to ensure it meets the needs of LSBC;
  - Seek to explore the potential to mitigate against early morning mowing and activity on the greens. This could be overcome by employing more green keepers during the event, meaning mowing could potentially start later, and or using quieter electrically powered mowers; and
  - Consider alternatives to spectator parking on Victoria Park, in order not to take out the Park for the whole of August. Consideration should be given to potential park and ride initiatives in partnership with Warwickshire College or other school sites;
94. Alongside consideration of the above issues as they impact on the extension of the national championships the council should also continue to monitor any moves to designate Leamington Spa as the National Bowls Centre and commit to consider the impacts on a similar basis if this should arise.

*Neil Allen Associates Registered Office:  
20 Brook Road, Lymm, Cheshire, WA139AH*

*A limited company, registered in  
England and Wales no. 616528*



# Appendix 1: Bowls Programme

July 2012

July 2012	Date	Start	Finish	Team	Rinks	Greens
Sun	1 <sup>st</sup>	2.00 10.00		Warwickshire VP's V Royal Household Warwickshire Women U25 Singles Warwickshire Women U25 Singles	6 3 3	1 1
Mon	2 <sup>nd</sup>	1.00		Warwickshire Women Four Wood	24	4
Tue	3 <sup>rd</sup>	6.15		Pottertons	6	
Wed	4 <sup>th</sup>	2.00 6.30		Courier League – RLSBC & Home Guard RLS Ladies V The Grange	12 3	
Thu	5 <sup>th</sup>			RLS Captains Day	12	
Fri	6 <sup>th</sup>	1.00		Warwickshire Women Four Wood	16	3
Sat	7 <sup>th</sup>	2.00 2.00		RLS Men's V Stoke Pottertons	6 6	
Sun	8 <sup>th</sup>	2.00 10.00		RLS - Hooper Cup Bowls England Junior Men Training	6 16	
Mon	9 <sup>th</sup>	1.00		Warwickshire Women Four Wood	8	2
Tue	10 <sup>th</sup>					
Wed	11 <sup>th</sup>	2.00		Courier League – RLSBC & Home Guard	12	
Thu	12 <sup>th</sup>	6.00 6.00		Home Guard V Coventry Ave Pottertons - Roll Up	6 3	
Fri	13 <sup>th</sup>					
Sat	14 <sup>th</sup>	2.00 1.00		RLS Ladies V Gents Warwickshire Women Four Wood	6 6	1
Sun	15 <sup>th</sup>	10.00		RLS Men's Open	24	
Mon	16 <sup>th</sup>	10.00		RLS Men's Open	24	
Tue	17 <sup>th</sup>	10.00 6.00		RLS Men's Open Pottertons - Roll Up	18 3	
Wed	18 <sup>th</sup>	10.00 2.00		RLS Men's Open Courier League – RLSBC & Home Guard	12 12	
Thu	19 <sup>th</sup>	10.00 6.00		RLS Men's Open Home Guard V Warks County Council	8 6	
Fri	20 <sup>th</sup>	10.00 10.00 12.30 3.00		RLS Men's Open Warwickshire Women Benevolent Triples Warwickshire Women Benevolent Triples Warwickshire Women Benevolent Triples	6 11 16 8	2 3 2
Sat	21 <sup>st</sup>	2.00		Pottertons	6	
Sun	22 <sup>nd</sup>					
Mon	23 <sup>rd</sup>	10.00 12.45		Warwickshire Women Benevolent Triples Warwickshire Women Benevolent Triples	6 6	1 1
Tue	25 <sup>th</sup>					
Wed	25 <sup>th</sup>	2.00		Courier League – RLSBC & Home Guard	12	
Thu	26 <sup>th</sup>	2.00 6.00		RLS Men's V Home Guard Pottertons - Roll Up	6 3	
Fri	27 <sup>th</sup>					
Sat	28 <sup>th</sup>			<b>Nationals</b>		
Sun	29 <sup>th</sup>			<b>Nationals</b>		
Mon	30 <sup>th</sup>			<b>Nationals</b>		
Tue	31 <sup>st</sup>	6.00 6.00		Home Guard V RLSBC Pottertons - Roll Up	6 3	

## August 2012

August 2012	Date	Start	Finish	Team	Rinks	Greens
Wed	1st					
Thu	2nd					
Fri	3rd					
Sat	4th					
Sun	5th					
Mon	6th			Nationals		
Tue	7th					
Wed	8th					
Thu	9th					
Fri	10th					
Sat	11th					
Sun	12th					
Mon	13th					
Tue	14th					
Wed	15th	2.00 6.00		Courier League – RLSBC & Home Guard RLS Ladies V Southam	12 4	
Thu	16th	2.00		RLS Ladies V Whitnash	4	
Fri	17th			RLS Stratford Herald League	12	
Sat	18th					
Sun	19th	10.00		VIBE National Championships	12	
Mon	20th	10.00 2.00		VIBE National Championships RLS Mixed Super Bowl Spain	12 6	
Tue	21st	10.00 6.00		VIBE National Championships Pottertons - Roll Up	12 3	
Wed	22nd	10.00 2.00		VIBE National Championships Courier League – RLSBC & Home Guard	12 12	
Thu	23rd	10.00 2.00		VIBE National Championships RLS Ladies V Stoke	12 4	
Fri	24th	10.00 10.00		VIBE National Championships Warwickshire Presidents V VIBE	12 6	
Sat	25th					
Sun	26th	10.00		Civil Service Nationals	12	
Mon	27th	10.00		Civil Service Nationals	12	
Tue	28th	10.00 6.00 2.00 6.00		Civil Service Nationals Home Guard V Wellesbourne RLS Ladies V Bilton Pottertons - Roll Up	12 4 6 3	
Wed	29th	10.00 2.00		Civil Service Nationals Courier League – RLSBC & Home Guard	6 12	
Thu	30th	10.00 2.00		Civil Service Nationals RLS Ladies V Avon	4 6	
Fri	31st					

## September 2012

Sept 2012	Date	Start	Finish	Team	Rinks	Greens
Sat	1 <sup>st</sup>	2.00		RLSBC Men's V Rugby Thornfield	6	
Sun	2 <sup>nd</sup>					
Mon	3 <sup>rd</sup>	10.00		Leamington Ladies Open	24	
Tue	4 <sup>th</sup>	10.00 6.00		Leamington Ladies Open Pottertons - Roll Up	24 6	
Wed	5 <sup>th</sup>	10.00 2.00		Leamington Ladies Open Courier League – RLSBC & Home Guard	12 12	
Thu	6 <sup>th</sup>	10.00		Leamington Ladies Open	12	
Fri	7 <sup>th</sup>	10.00		Leamington Ladies Open	12	
Sat	8 <sup>th</sup>					
Sun	9 <sup>th</sup>	2.00		RLSBC Club Finals	12	
Mon	10 <sup>th</sup>					
Tue	11 <sup>th</sup>	2.00 6.00		RLS Ladies V Bidford on Avon Pottertons - Roll Up	6 3	
Wed	12 <sup>th</sup>	2.00		Courier League – RLSBC & Home Guard	12	
Thu	13 <sup>th</sup>	10.00		Customs & Excise Nationals	12	
Fri	14 <sup>th</sup>	10.00		Customs & Excise Nationals	12	
Sat	15 <sup>th</sup>	2.00		RLSBC Men's V Lillington	6	
Sun	16 <sup>th</sup>	<b>9.00</b>		<b>Bowls England – TOP CLUB</b>	24	
Mon	17 <sup>th</sup>	<b>9.00</b>		<b>Bowls England – TOP CLUB</b>	24	
Tue	18 <sup>th</sup>	2.00 6.00		RLS Ladies V Warwick Boat Club Pottertons - Roll Up	6 3	
Wed	19 <sup>th</sup>	10.00		<b>Courier League Gala</b>	18	
Thu	20 <sup>th</sup>	3.00 6.00		RLS Ladies Gala Pottertons - Roll Up	12 3	
Fri	21 <sup>st</sup>					
Sat	22 <sup>nd</sup>					
Sun	23 <sup>rd</sup>					
Mon	24 <sup>th</sup>					
Tue	25 <sup>th</sup>	6.00		Pottertons - Roll Up	3	
Wed	26 <sup>th</sup>					
Thu	27 <sup>th</sup>					
Fri	28 <sup>th</sup>					
Sat	29 <sup>th</sup>	2.00		RLSBC Men's V Three Spires	6	
Sun	30 <sup>th</sup>			<b>Last day of greens</b>		

*\*Note for each month*

- Unless exceptional events occur RLSBC should have up to 9 rinks at any one time. These can be any rinks and they have no claim over any particular green.
- Unless exceptional events occur Home Guard have 3 rinks booked on Mondays, Fridays and Sundays from 2pm.

# Appendix 2: Residents Survey

## Resident Survey

Please read and return in the FREEPOST envelope provided no later than Monday 16<sup>th</sup> July

For several years now Leamington Spa have played host to the Women's National Bowls Championships. The event takes place over 16 days in August. Warwick District Council has been approached by Bowls England to host the Men's Championships to run after the Women's. This will mean the Greens will be occupied by the event for 30 days. If the event were to come, it would start in 2014 and begin on the 2<sup>nd</sup> August for 30 days.

Residents clearly have experience of the impacts of the Women's event over 16 days and the Council are now keen to understand the potential impacts and issues with extending the Championships to a total of 30 days, incorporating both the Men's and Women's events. Neil Allen Associates (NAA) has been appointed by the Council to assist with looking at various impacts of the event including that on residents.

This survey provides you the opportunity to have your say before the Council makes any decisions about the Men's Championships. There will also be a **drop in session at the Bowls Pavilion on Tuesday 10<sup>th</sup> July** where you will be able to meet *face to face* and give your views. The event will run from 12 o'clock midday until 7 o'clock in the evening and you are invited to turn up at any time to find out more, ask questions and give your views on an informal basis to Council representatives and members of the NAA team.

PLEASE PROVIDE YOUR POSTCODE

.....

1. Which statement best describes your views on the current Women's National Championships?  
(please tick one box)

Supportive, think it is great for the area

☐

No strong views, the event has little impact on me

☐

The event is disruptive for the area and has a negative impact

☐

Please expand.....

2. Do you attend the Championships as a spectator? (please tick one box)

Yes

☐

No

☐

3. Do you get involved in the event in any other way? e.g. renting out your house.

Please state.....

4. The Council currently employs various strategies to reduce the impact of the Women's Championships on residents e.g. Parking Permits. How do you feel about the measure taken?  
(please tick one box)

They work well and minimize the negative impact

☐

No strong views, the event has little impact on me

☐

They have little impact and disruption is still significant

☐

Please expand.....

5. Would you welcome the expansion of the Men's Championships over a longer time period?  
(please tick one box)

Yes

☐

No Strong Views

☐

No

☐

Please expand.....

6. What things would you want to see put in place if the event was to expand to 30 days e.g. extension of the permit parking scheme.

Please expand.....

7. Any other views?

.....

.....

.....

.....

Please return in the FREEPOST envelope by Monday 16<sup>th</sup> July. Any questions on the survey, OR  
SHOULD YOU PREFER TO RECEIVE AND RETURN AN ELECTRONIC COPY please contact  
[mail@neilallenassociates.co.uk](mailto:mail@neilallenassociates.co.uk)

THANK YOU